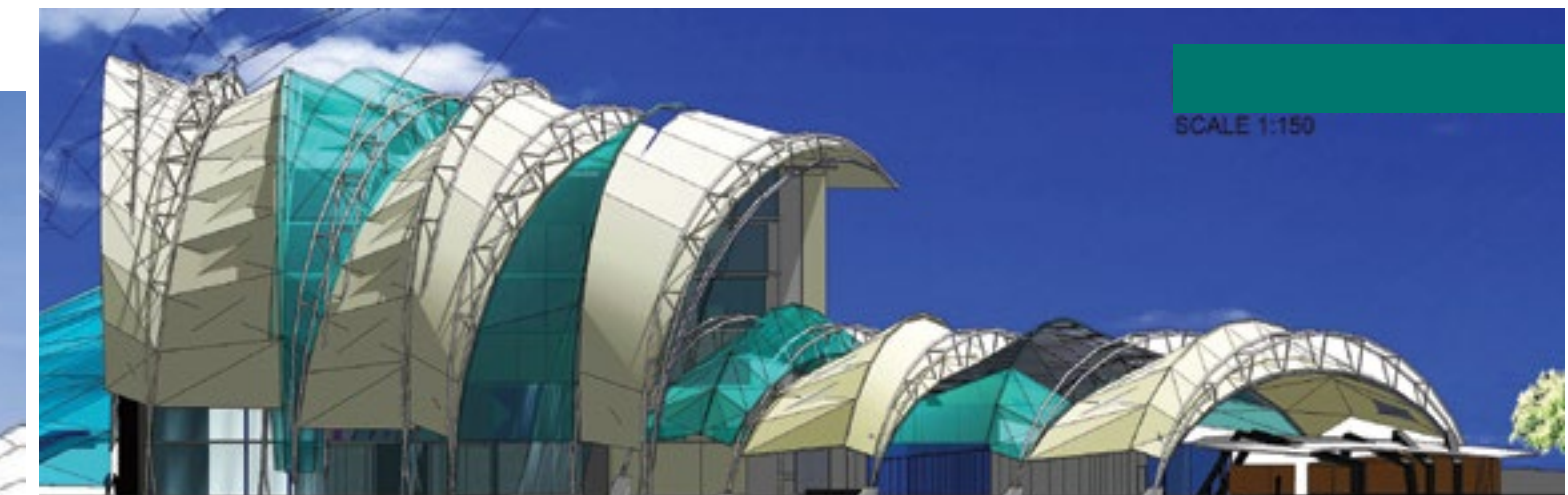
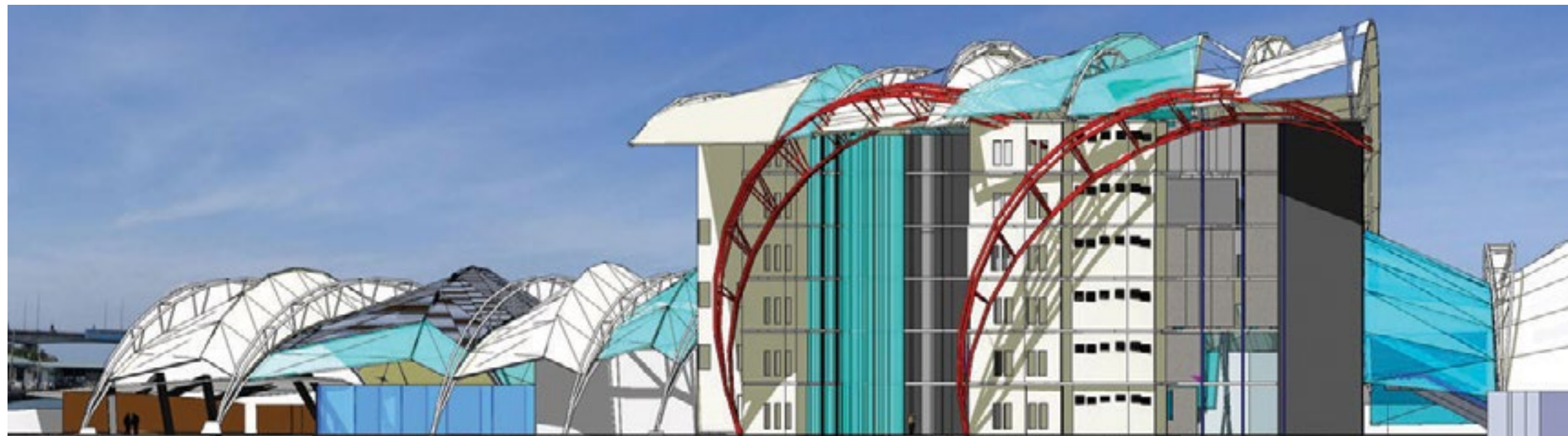
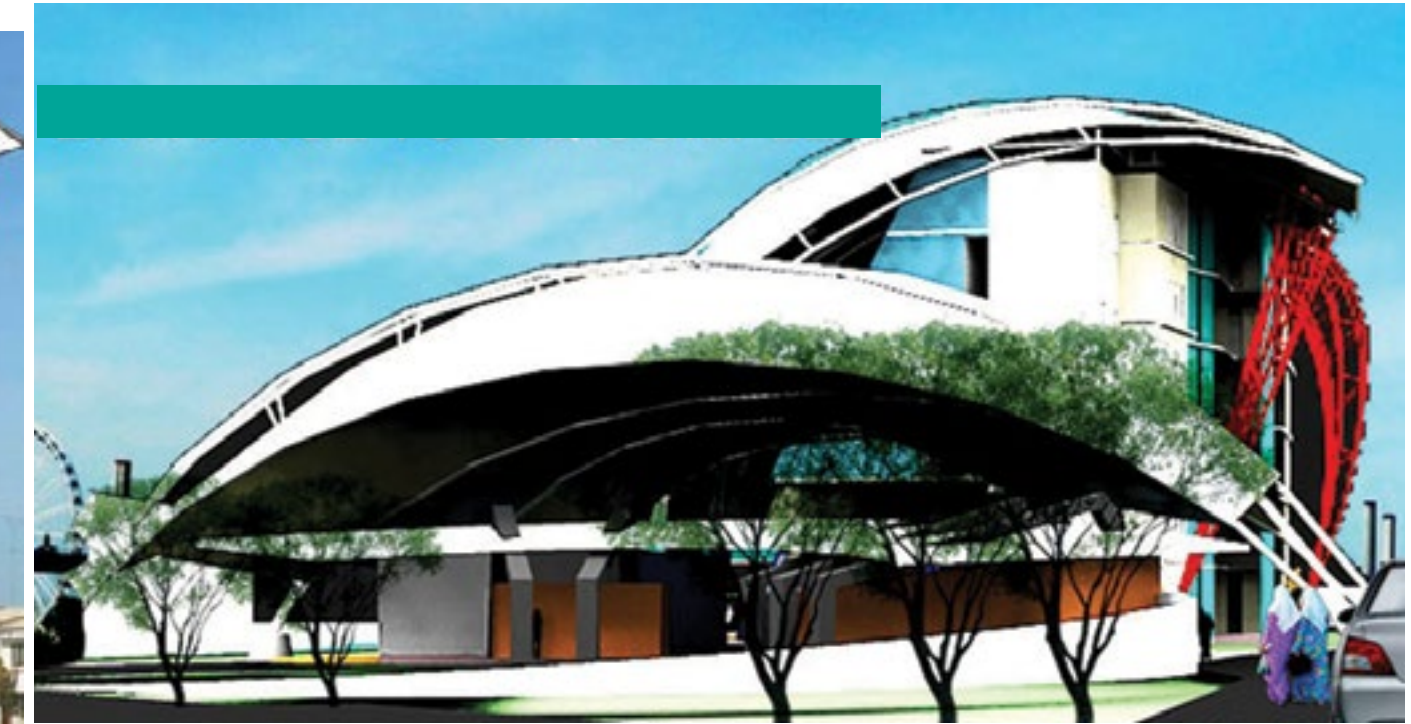
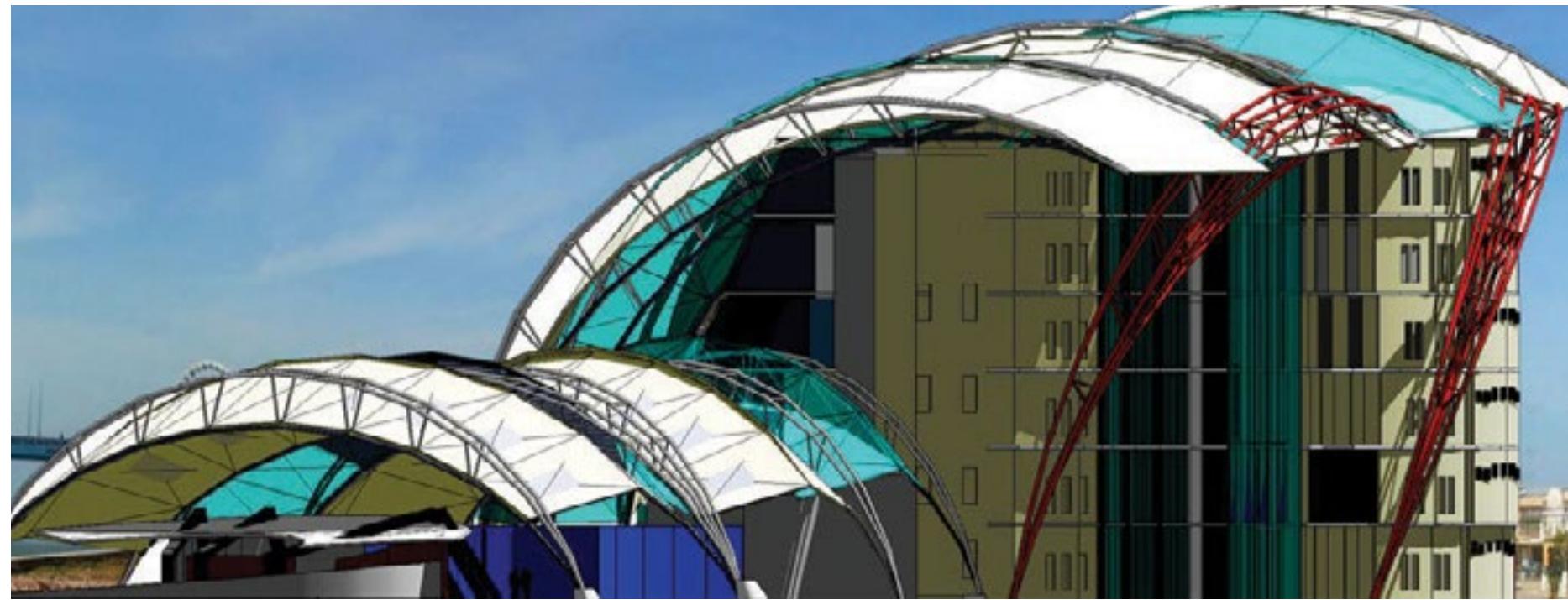


Modernistic Interplay

Kalsom Mohamad

'Architecture can give more value to outside space – Richardson, 2005'. Modernist building with a twist that reflects the new attitude of public office to strive towards transparency and creativity. This expressive and bold scheme is dominated by a series of articulated exposed parabolic curves on open framing structure of variable lengths and heights over an open plan layout. They alternate with solid and transparent envelopes. The functional space' sequences, security zoning and connectivity are successfully reflected by the interplay of solidness and transparency of the envelope. Solid reflects security and nil accessibility while transparency creates a more approachable atmosphere without compromising the necessary senses of security, safety and authority of the complex.



This scheme is intriguing and is a brave attempt to redefine the public office's working environment. It changes the perception towards itself by creating a distinctive building by using unconventional construction methods and materials.

■ Sailatul Akmal Nordin