

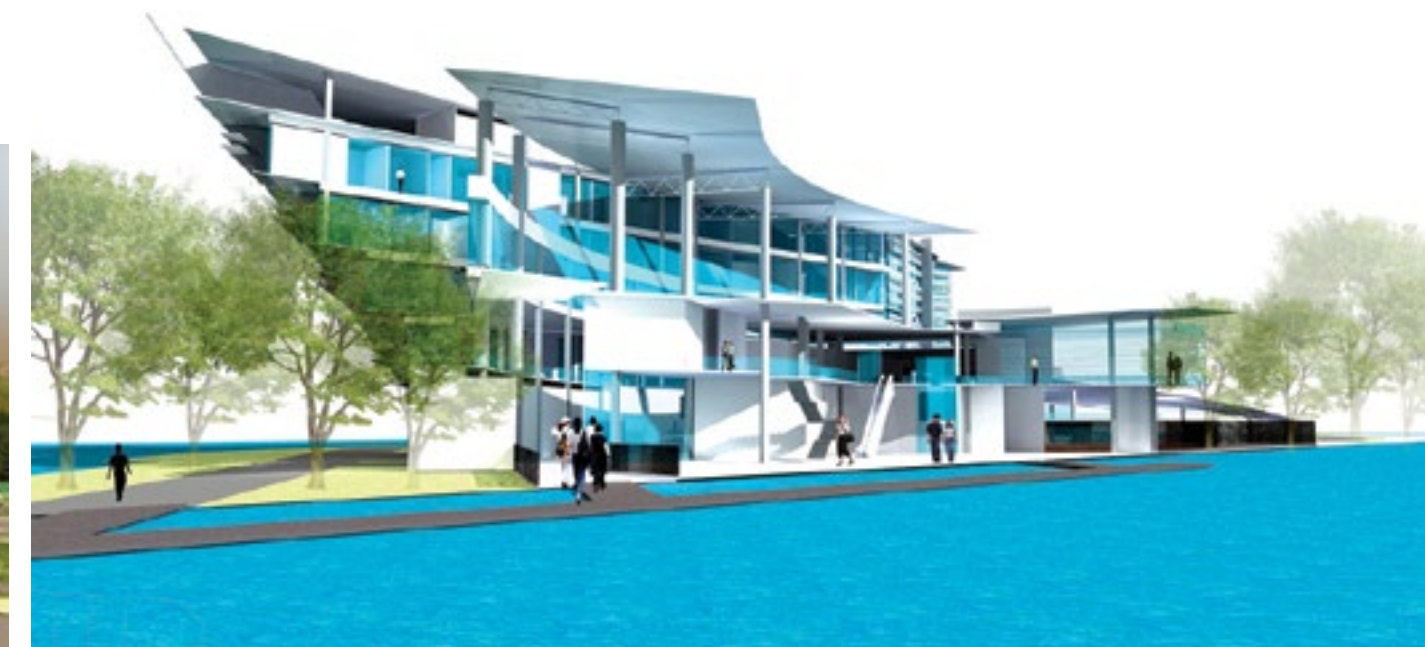
Flowing Planes

Meor Mohammad Fared

The two main elements that make up the Custom, Immigration and Quarantine Complex are the departure and arrival processing zones. The continuous flow of circulation between the two areas dictates the space planning and subsequently the form of the complex. The flowing curves of vehicular access continue into the Main Lobby and disperse into the two processing zones.

Linear arrangements of spaces, or curvilinear planes with the same materials, are used to indicate the path and directions of this continuous motion in the building. The users will experience ascent with a clear direction within the spaces. Visual connections will lead users to move forward and linking them to the existing surroundings.

Two low curvilinear forms that stretch into the sea represent the departure and arrival zones; whereas, the distinct rectilinear form of the office tower stands tall in the background overlooking the two zones.



■ Loo Jie Hsin