

Spatial Fluidity

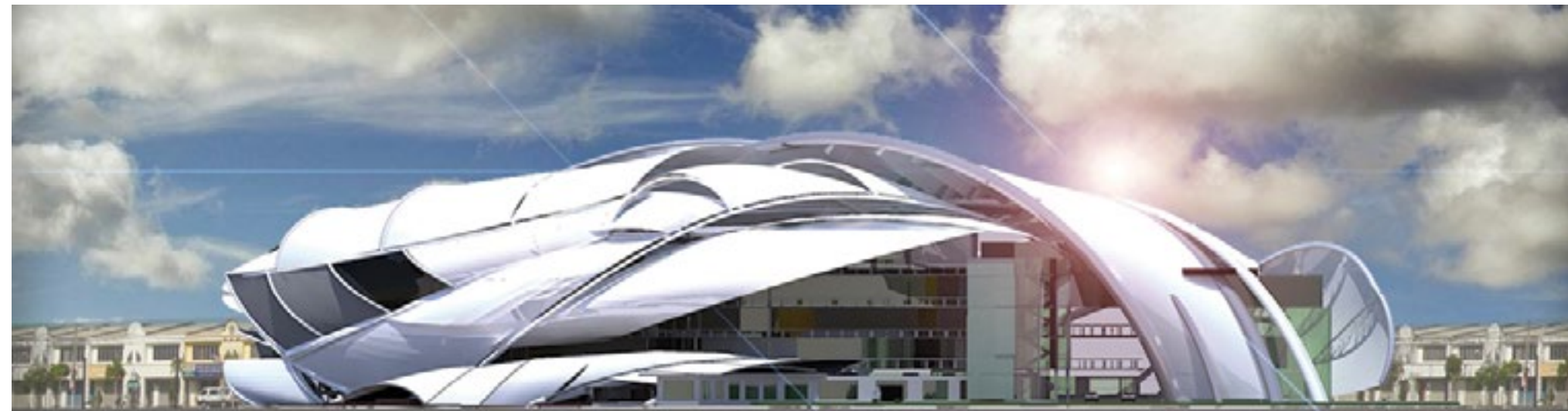
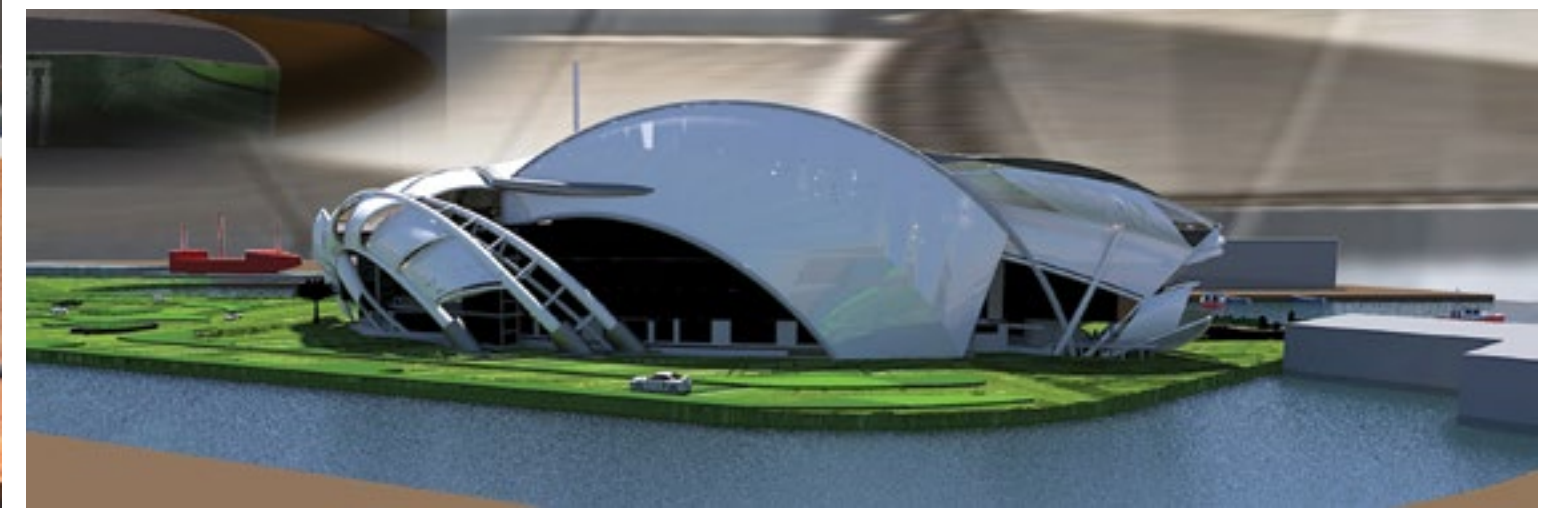
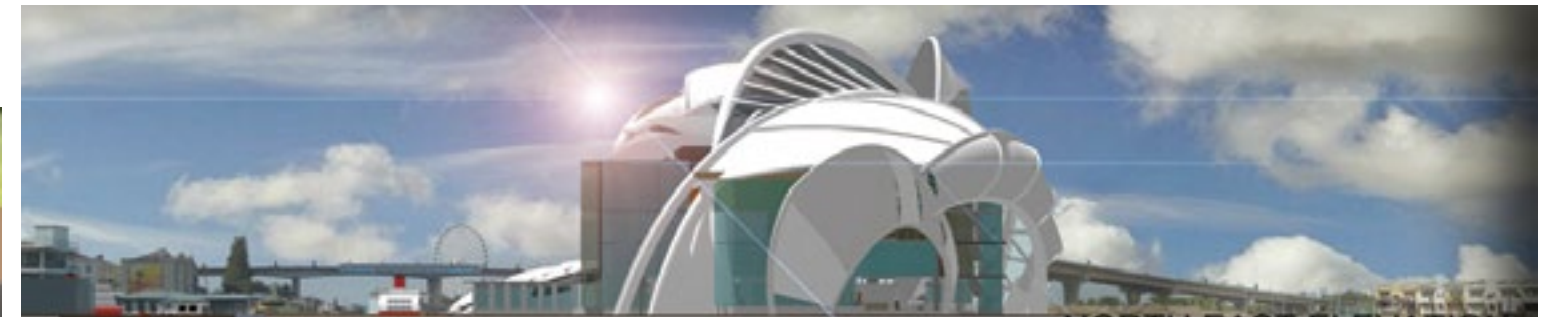
Meor Mohammad Fared

The design scheme is based on an open integration of multiple platforms. Every space within the Complex is interconnected via networks of elevators, walkways and stairs that create a continuity of circulation. The processing zone is the focal point of the complex that binds all the spaces together. Open areas are scattered at different levels offering users panoramic views of Malacca city.



'Fluidity' is the main theme for the design proposal. Fluidity means free flow and uninterrupted circulation, such as fluidity in the spatial experiences and fluidity of the form manifested in a snake's skeletal shape. Integration of structural aesthetics and a sustainable approach are also explored in this scheme. The two elements are fully utilised in expressing architectural ideas and in enriching the design proposal.

The processing zone being the nerve of the complex has a triple volume atrium space. A skylight that runs along the east-west axis illuminates this zone. The complex is conceived mainly from the snake skin concept where natural lighting enters the building and generates a pleasant ambient lighting throughout the complex. Apart from the aesthetic effects of having the second skin, it also acts as an intermediate medium to filter heat and direct sunlight. Moreover, the 'breathing skin' functions as a wind scoop that maximises cross ventilation hence reducing the overall energy consumption of the complex.



■ Muhamad Izuan Maffi