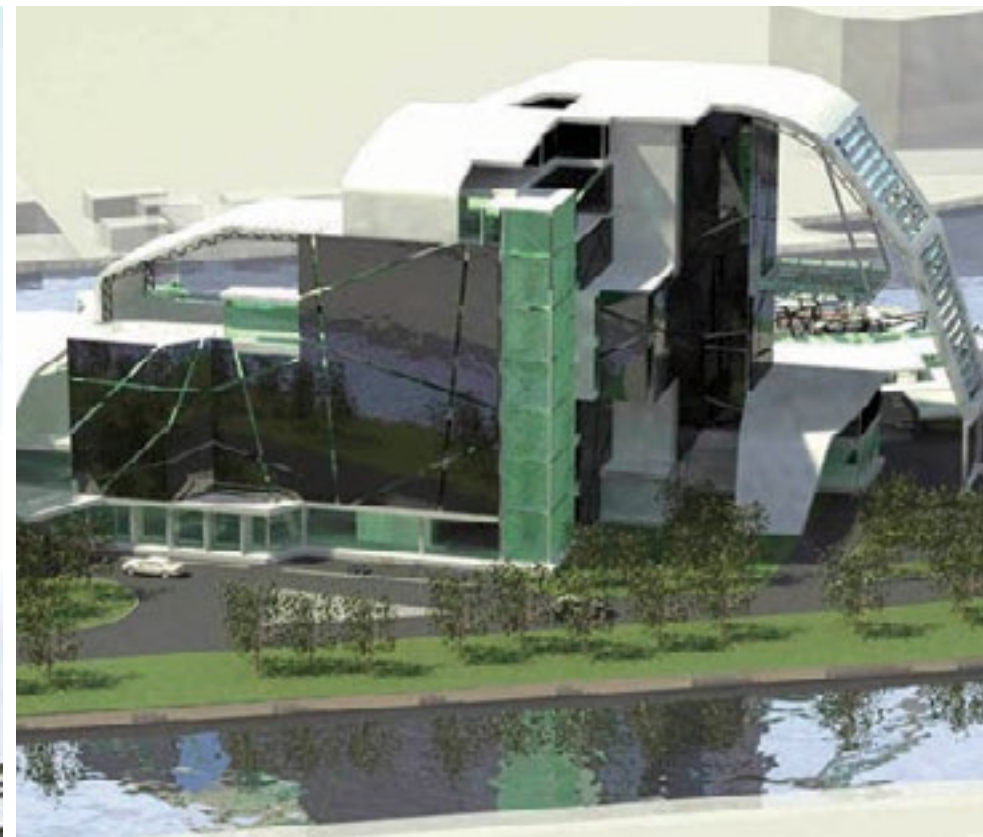
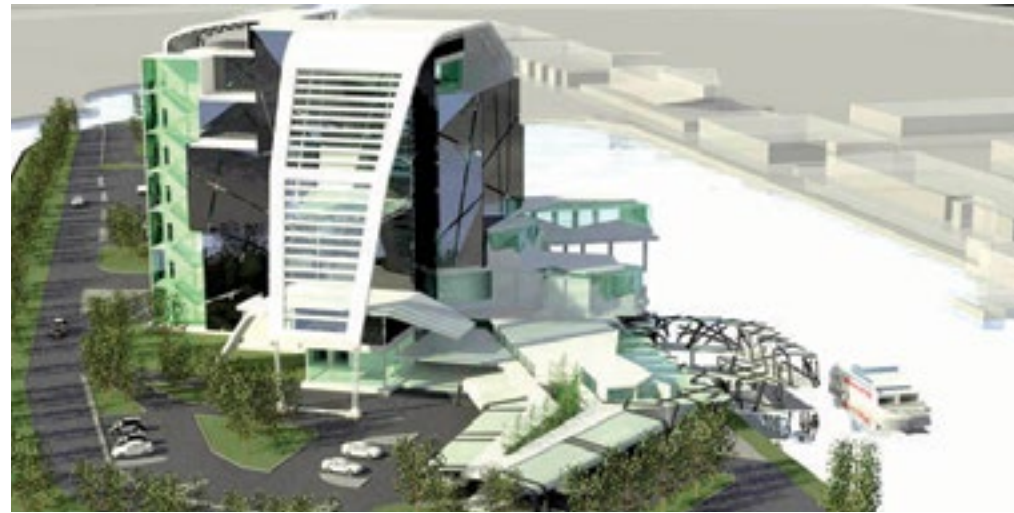


# Sustainable Morphology

Nik Ariff Azmee & Meor Mohammad Fared

What comes immediately across in this scheme is, its preoccupation with dealing with the weather elements to achieve environmentally optimum comfort before the building is designed inside. This 'weather shield' prominently stands out to be given the role of an aesthetic screen to the building. The rather over-sized sun-shading screen facing west also conjures up an illusion of a sail billowing against the wind. The spaces within are thus designed in relation to this outer skin and is balanced between the roles needed for weather controlling and viewing to the outside or for natural lighting to filter through.



■ Nor Hasni Ahmad