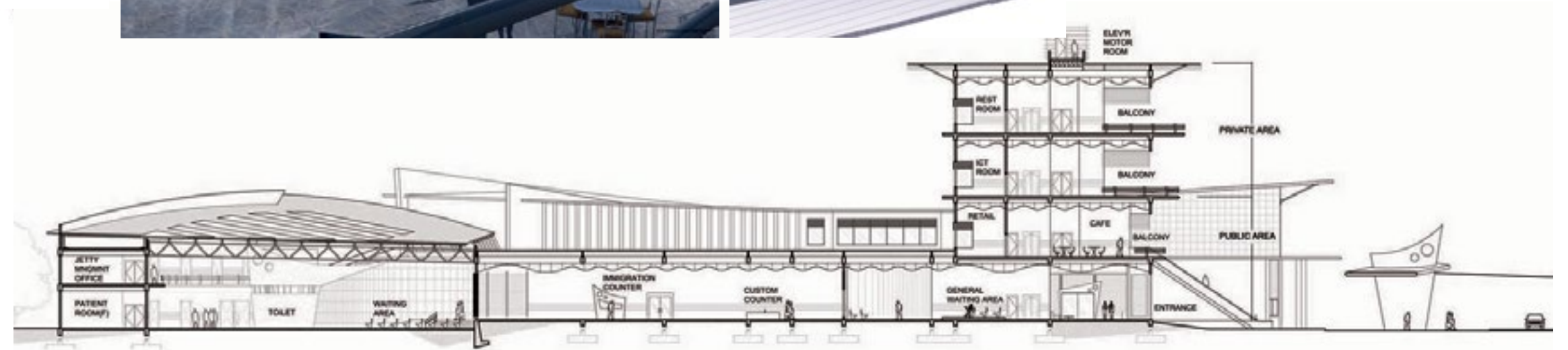




Relational Formation

Nik Ariff Azmee & Meor Mohammad Fared

The scheme portrays how a formal composition influences the spatial planning and design in creating spatial qualities within a building. The displayed planning acumen indicates a space planning approach that is sympathetic to the form that envelopes it. The scheme thus has a well balanced disposition that the excitement of its morphological composition and facades is continued into the spaces within. Considerable thoughts were given to the flow of pedestrians into the complex, especially from the Dataran Sungai Melaka on the north-east, which meanders through the carpark and ends at the Main Lobby of the complex.



■ Muhammad Fairuz Ahamad