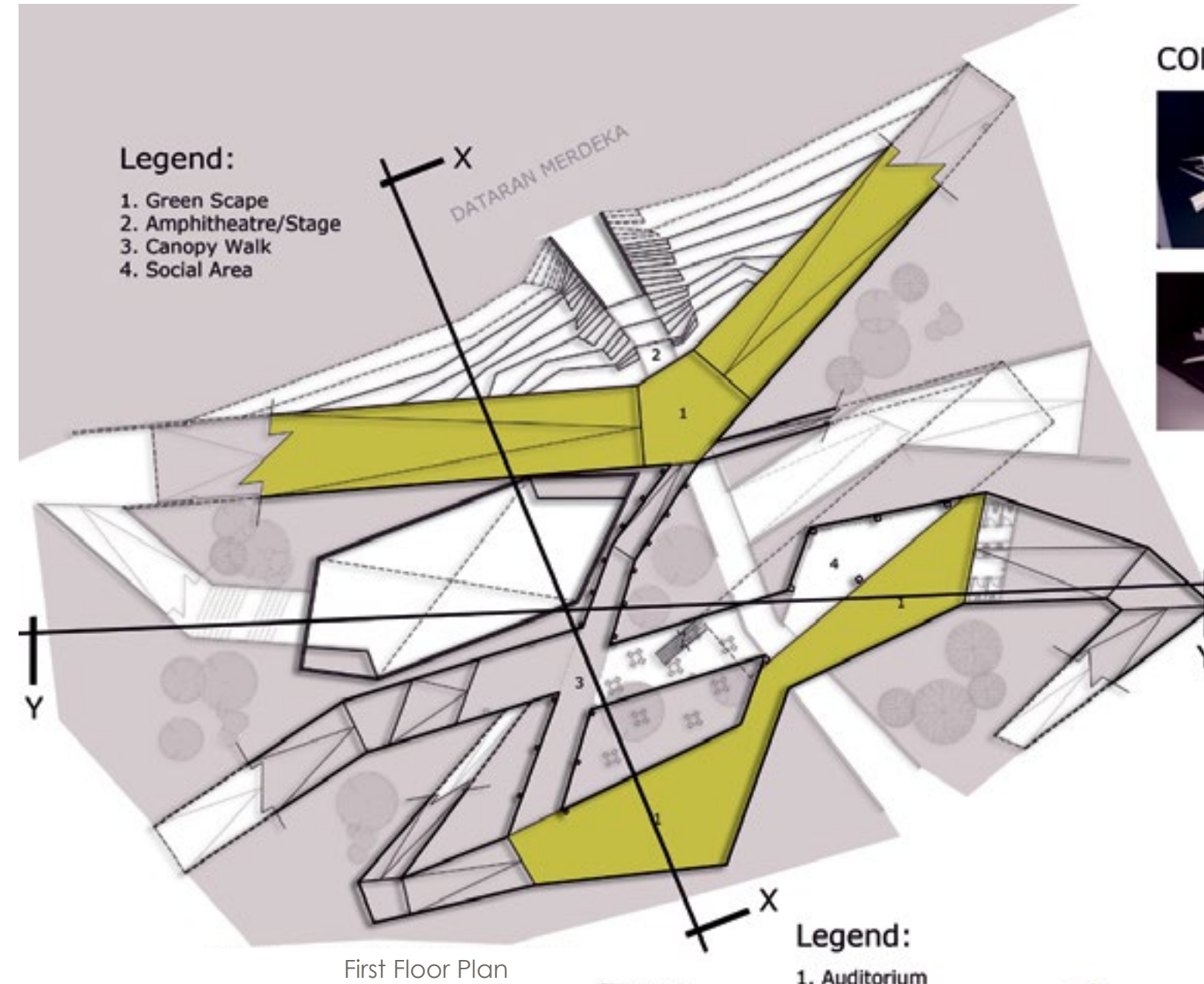
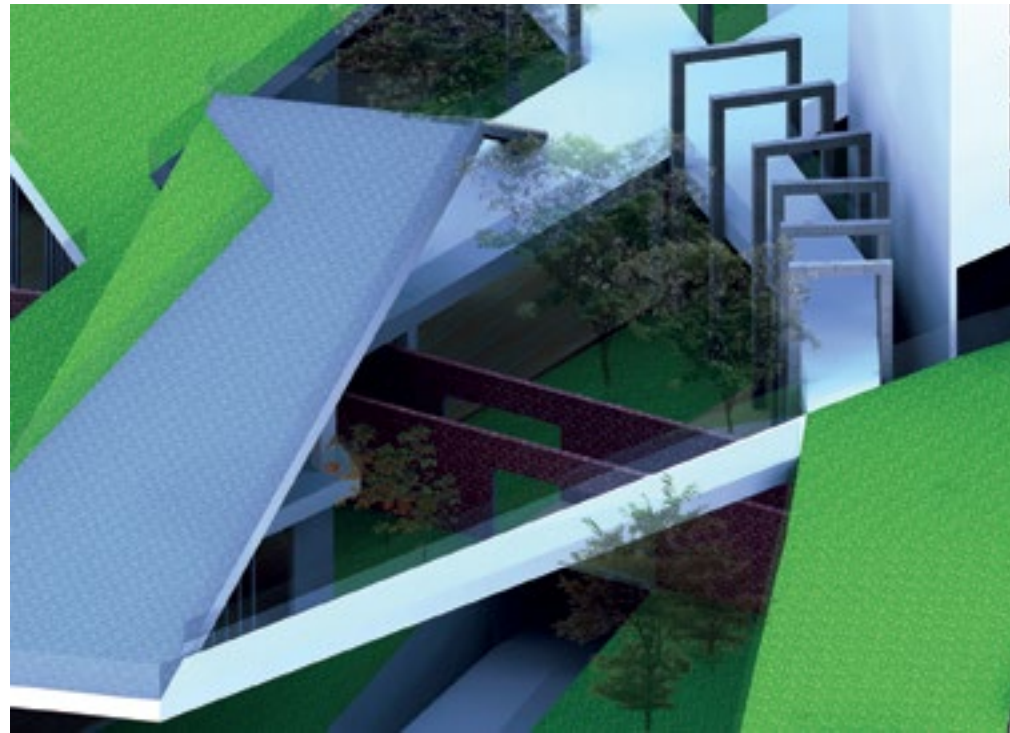


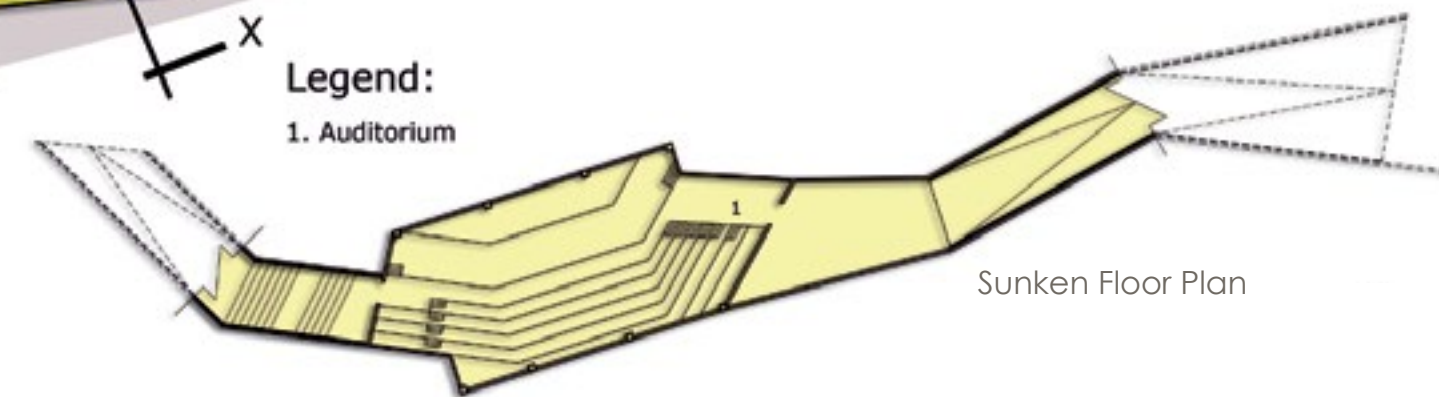
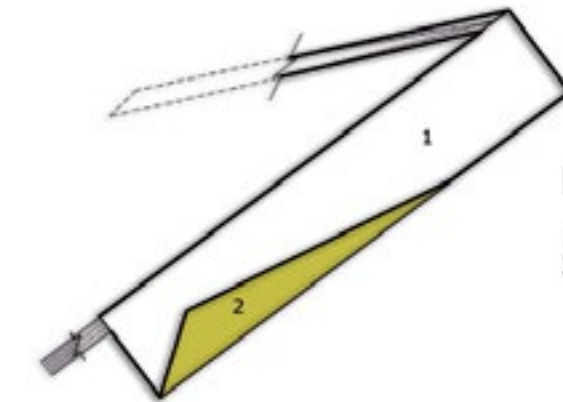
Angular Evolution

Nik Ariff Azmee & Kalsom Mohamad

This is one scheme that reacts aggressively against the regularities around the site. The aggression is displayed in the manner the terrain is layered haphazardly and very angular rather than rectangular and rectilinear. Around and within this, the circulatory routes are clearly defined. The spaces created by the evolution of forms help to further dramatise the spatial qualities. The human experience is further heightened through exploratory and discovery, as patrons are brought through the scheme at different levels offering varying vistas of the grandeur of Dataran Merdeka.



CONCEPTUAL MODEL:



■ Teh Min Shen