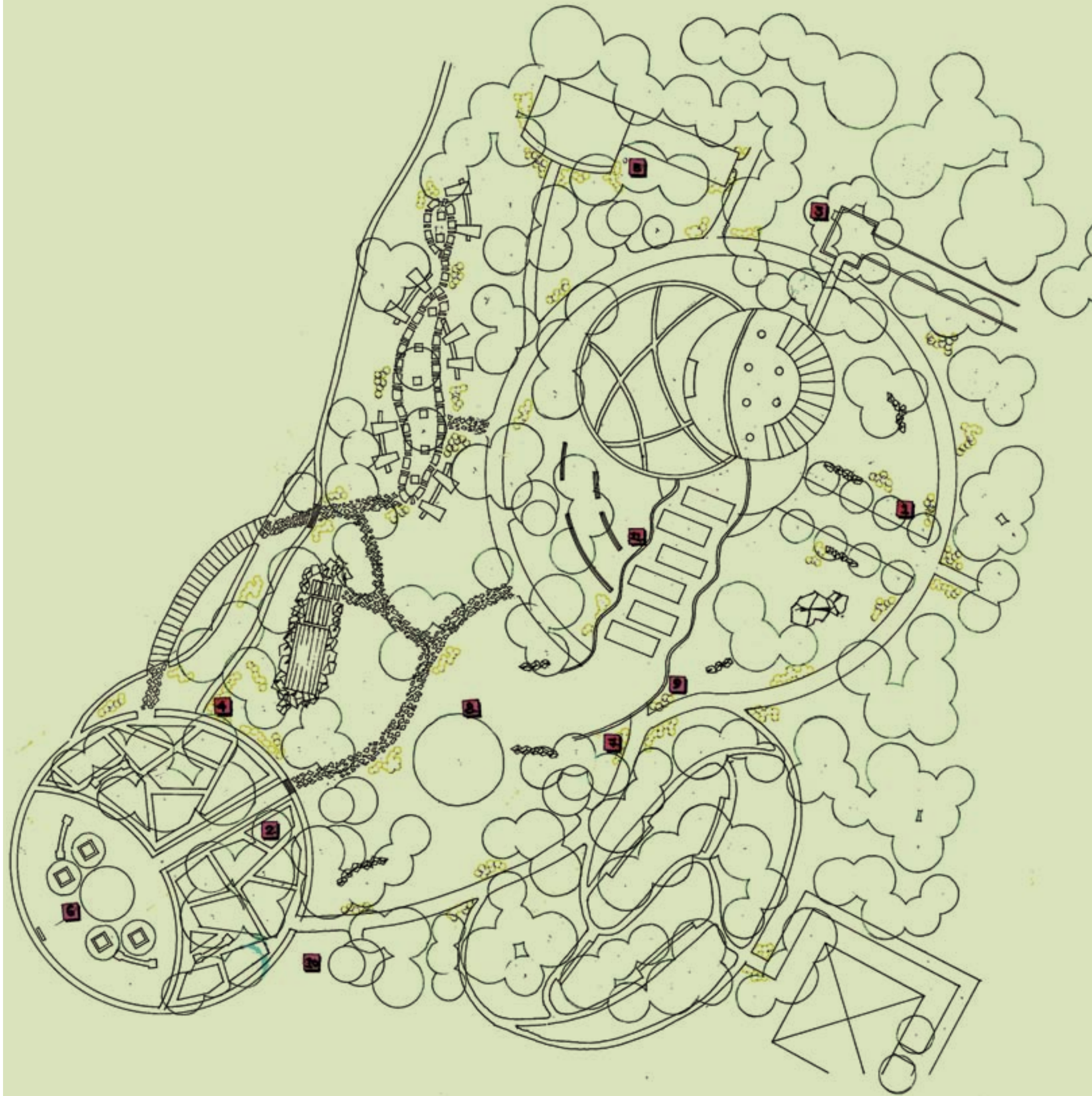


The Ripple

Mohd Nazri Saidon, Asraf Abdul Rahman & Ina Krisantia

This project is about designing a space extension of Tasik Raban Resort called 'the Ripple'. It aims to be highly attractive to visitors to experience the beautiful views towards Tasik Raban. This area has been identified is currently an attractive location for eco-tourism in the Lenggong District, Perak.

The ripple design proposed by Kong Kok How has two main objectives: adding the quality interaction of space between human and nature, and enhancing and connecting the existing space with the proposed site. These aims are intended to improve the surrounding, landscaping and identity of the space. The ripple design is derived from an analogy of wavelike motion on the water surface. This analogy intends to replicate the power of waves to add energy to the surrounding area and becoming more happening and interesting.



■ Kong Kok How

Kong Kok How focus the planning in uniting two areas, the proposed café and plaza, with well-connected pedestrian paths. A series of air walk, avenues and silent paths connect as the main path to tie all the landscape areas. These paths allow a series of experiencing nature such as flora and fauna, landforms and water elements. Overall, the smooth movement provides visitors with both man-made and natural environmental experiences.