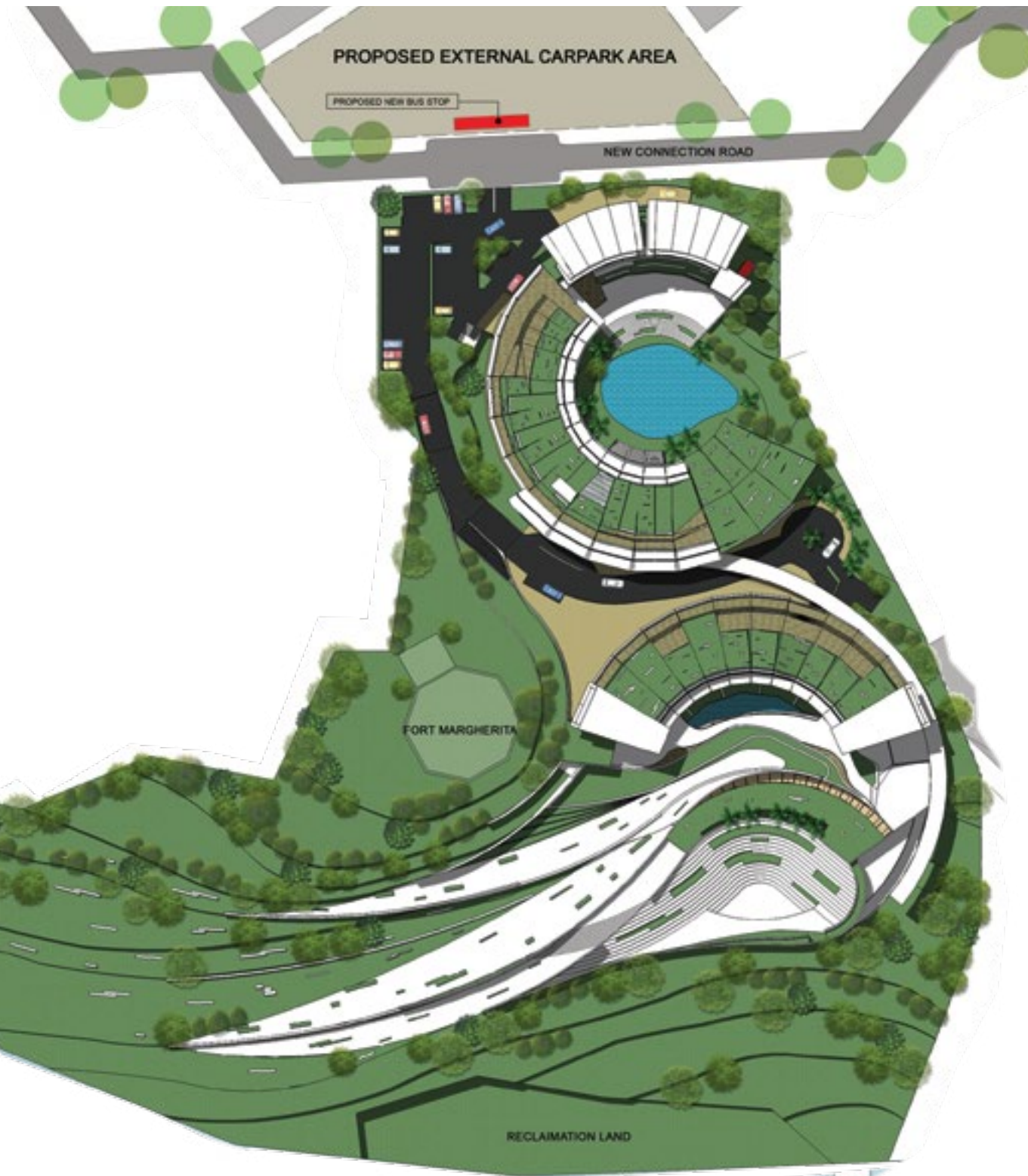


# Sarawak Academy of Arts

Elias@Ilias Salleh

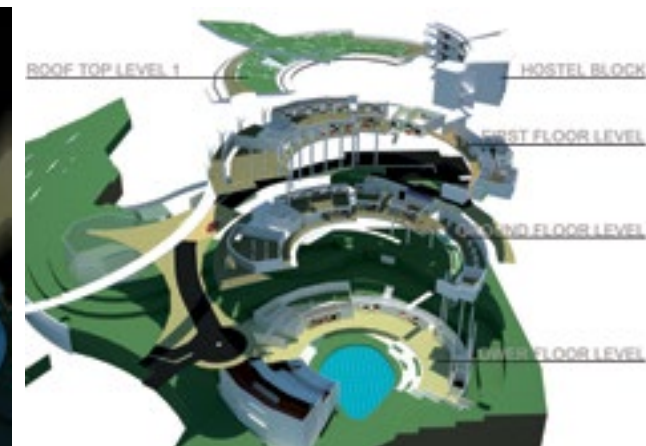
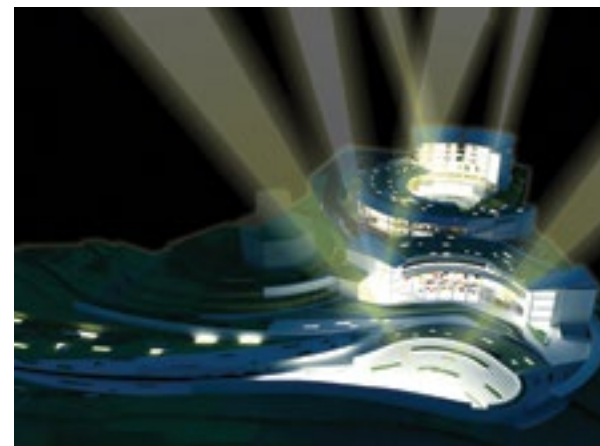
The proposed Sarawak Academy of Arts is located on a prominent site across the Sarawak River from the Kuching City Centre, well visible from its famous riverfront. The 13-acre undulating site adjoins the imposing new *Dewan Undangan Negeri Sarawak* (Sarawak State Legislative Assembly Complex) as well as the historical Astana and the military barracks within the preserved Fort Margherita.

The site planning concept is based on the motifs of Sarawak's Iban tattoo



with its suave flowing curvilinear lines. The site, which descends towards the river, is divided into two zoning rings by the central avenue. It forms the pedestrian circulation spine, linking the two campus entrances - the main one from *Dewan Undangan Negeri Sarawak* and the other from *Kampung Boyan*. The strategy of the campus layout is to limit vehicular access into the site thus creating a safe and healthy environment.

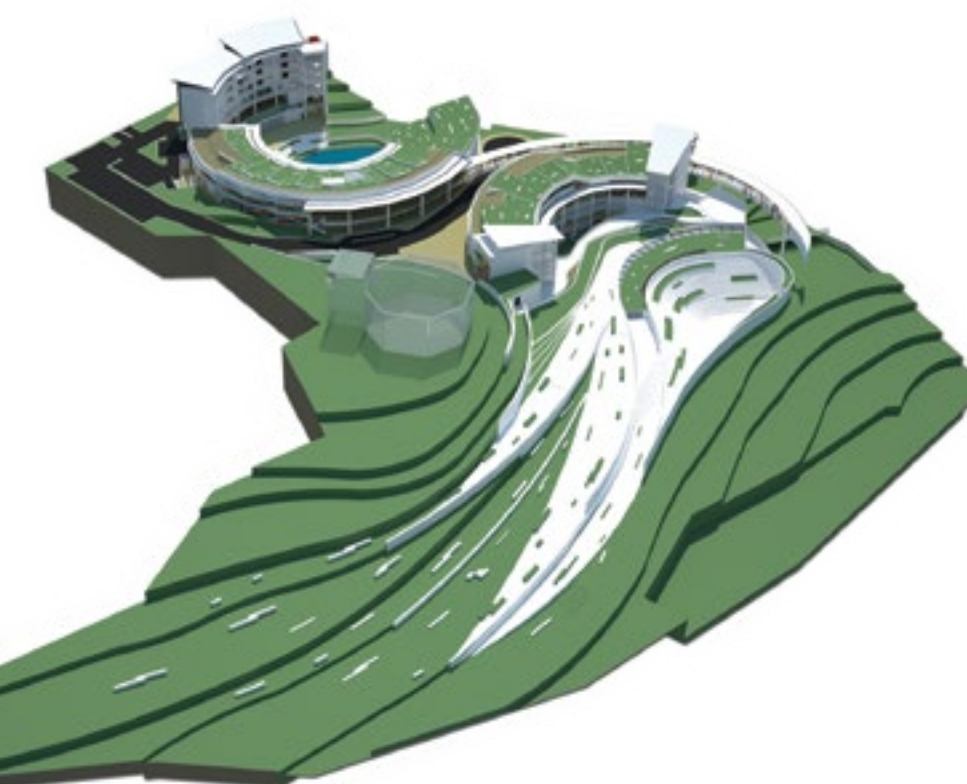
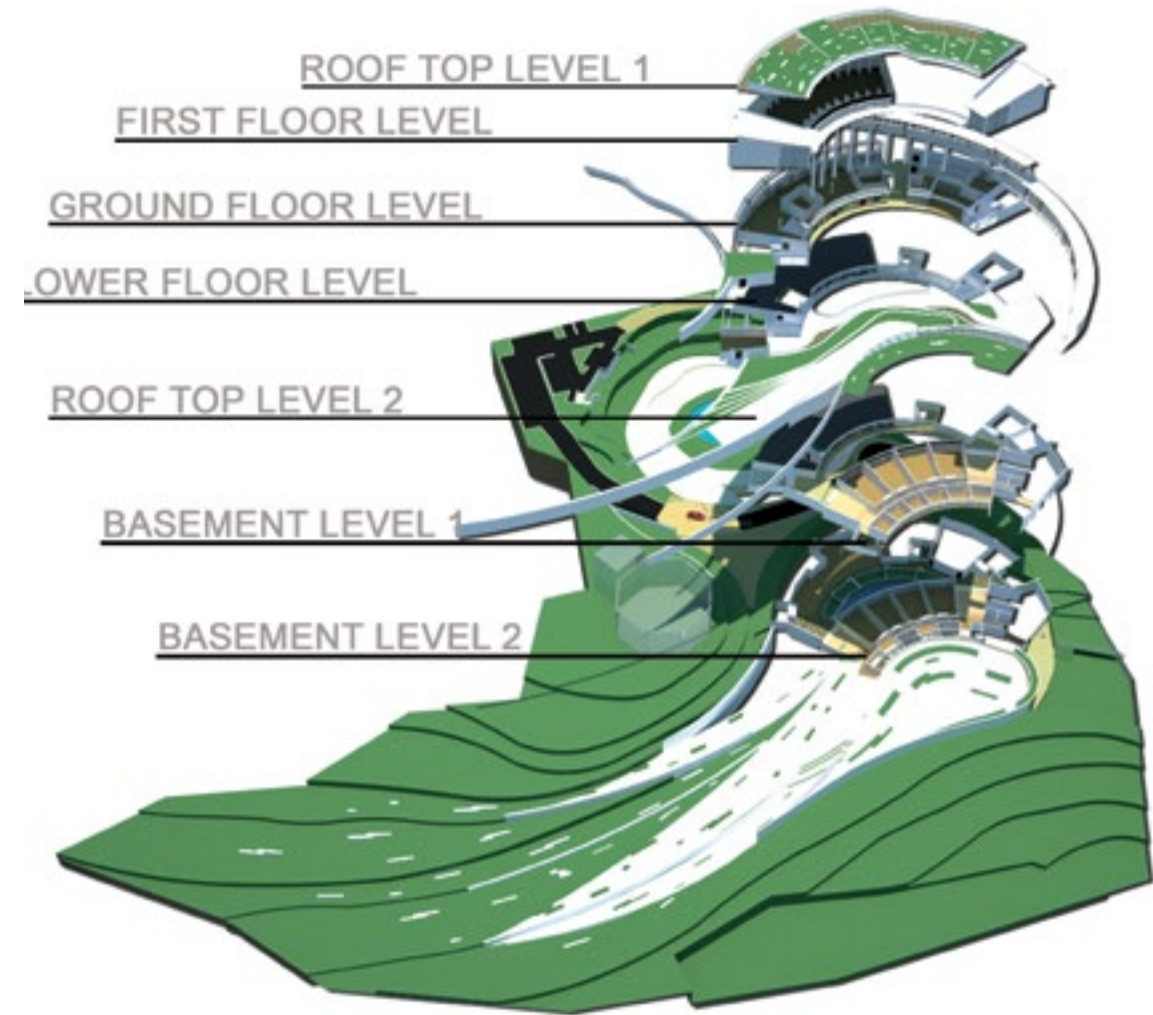
The Academy is intended as an art learning centre for research and experimentation of heritage and cultural activities of Sarawak.



It comprises six components designed by layers where each layer has a different function. The six components are: 1) the Open Art Plaza incorporating administration, public facilities and spaces with large open foyer descending to the open plaza and main gallery; 2) the Multi-purpose Complex consisting mainly of recreation facilities with man-made water body and pedestrian mall; 3) the Living Cluster for students and essential staff; 4) the Library Complex and the Great Hall; 5) the Academic Complex for learning purposes and 6) the Amphitheatre as the culmination space which opens for public events. The layering of functions is created to achieve various experiences of circulation leading to different functional and spatial characteristics in the campus.

Environmental considerations have been addressed by maximising natural ventilation, sun-shading and daylighting applications in the building's layout and design while adopting rainwater harvesting and water element landscaping. Sunken courtyards and pocket gardens interplay between building blocks and descending levels.

The hallmark of this campus design is the articulated exploitation of multi-level opportunities for indoor and outdoor spatial integration while ensuring flexible indoor space utilisation. This is highlighted in the academic complex. The overall design has maintained respect for the heritage sites nearby and successfully augmented the Dewan Undangan Negeri Sarawak riverfront view from the Kuching City Centre across the Sarawak River.



■ Muhammad Helmi Noor Rahmat