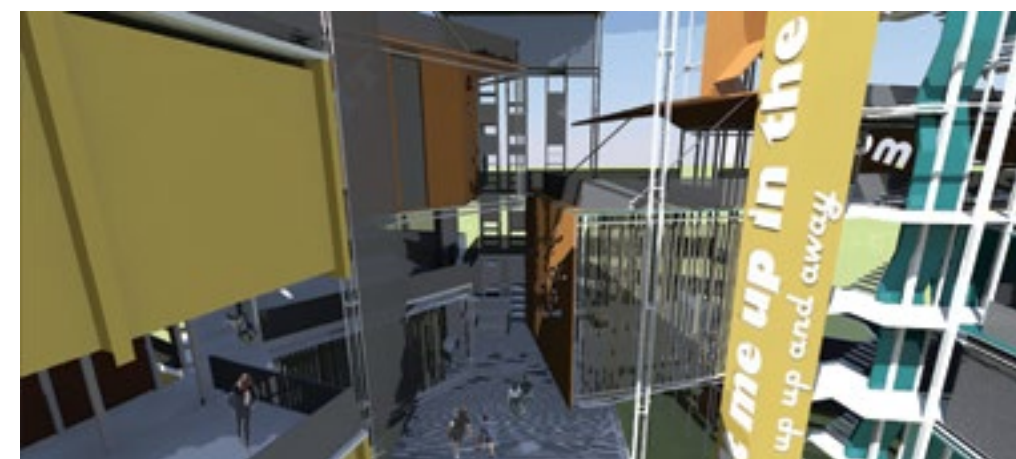
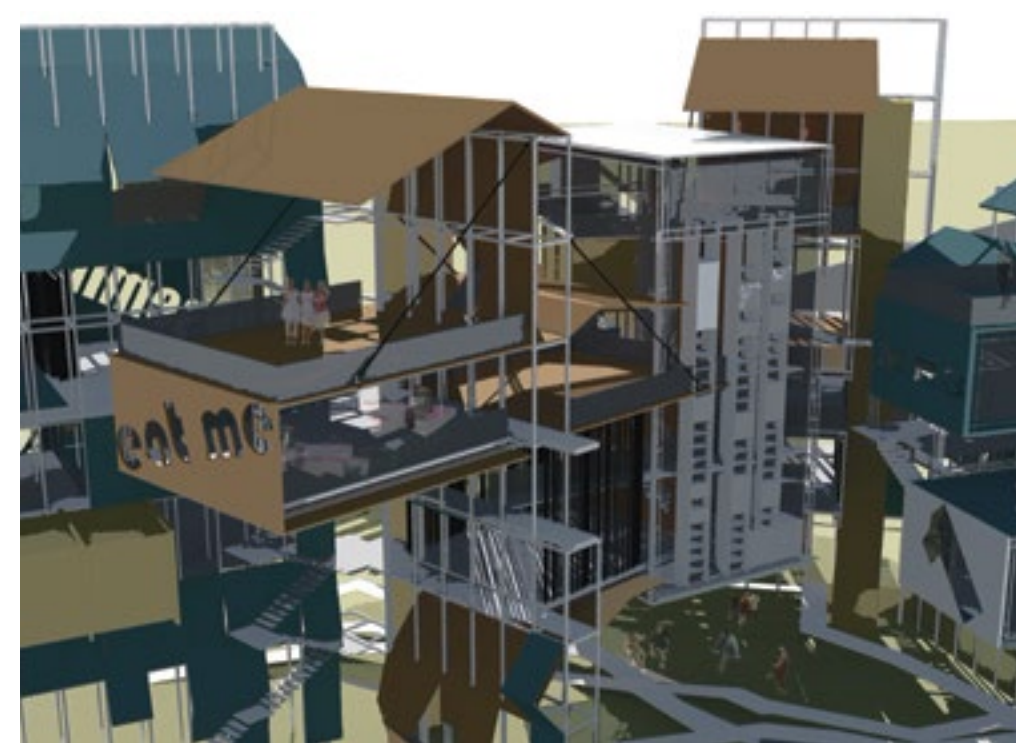
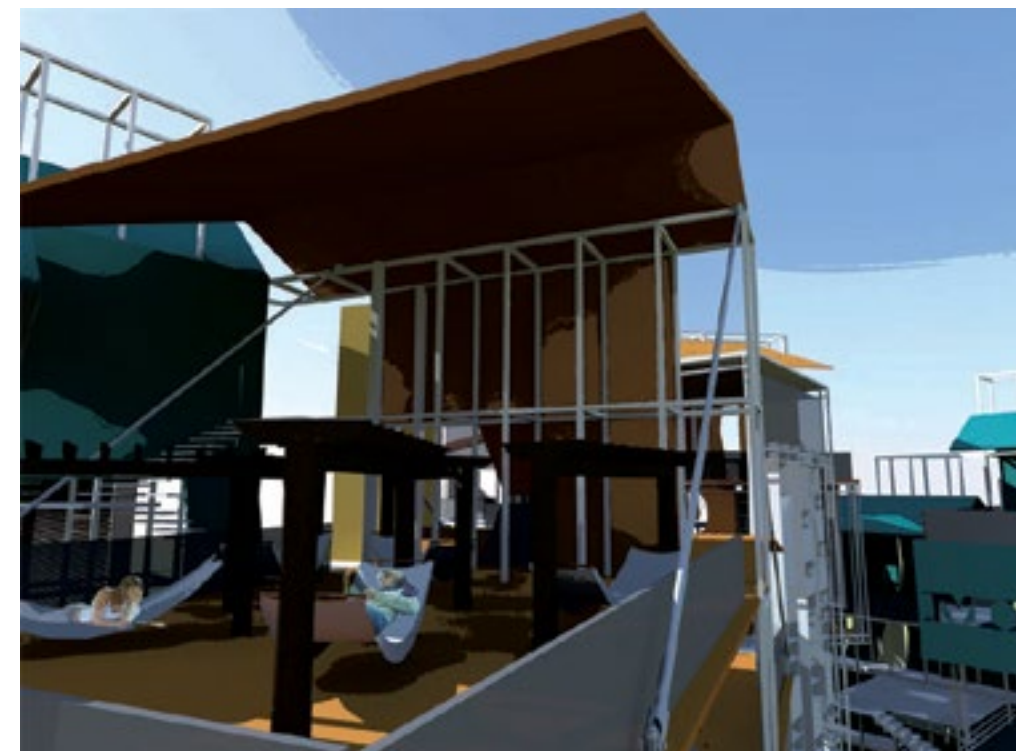
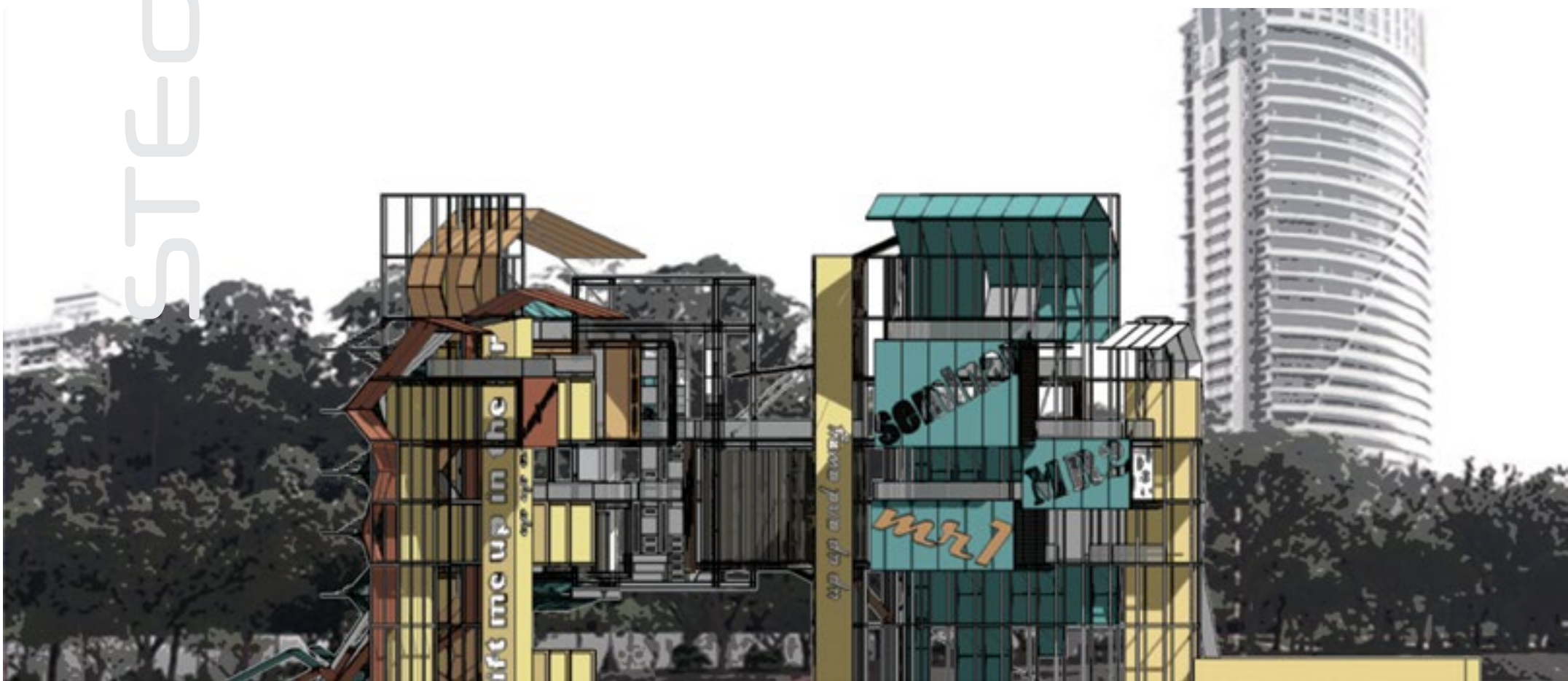


Nexus

Nik Ariff Azmee & Wan Srihani Wan Mohamed

The artefact is an office for Green Building administrators that is set within an urban lung. The office, however, is set to be the lung itself in that it breathes within its urban settings.

A prominent outcome in trying to achieve this is the reassessment of generic office spaces by recognising the familiar habits that have been formed by their conventional forms. Additionally, Low Ee Sheng encourages newer forms to accommodate these habits or allow new habits to be formed. With this approach, a new structure and environment for working within an office develops, while, paving the way for a newer office form simultaneously.



The artefact begins by establishing an actual structural system that will hold office units to be placed at random. Thus, they open the possibilities of a new office configuration. These units would then be allowed to open itself to the environment as much as possible thereby controlling it as individual rather than as a huge singular mass.

The main structural frame would further accommodate various methods and types of skin for shading and viewing dramatic vistas in response to the surrounding environment. As much as the office units have been designed to 'breathe' by themselves, the overall formal composition suggests they pulsate more due to its erratic facade than it does breathe.

■ Low Ee Sheng

