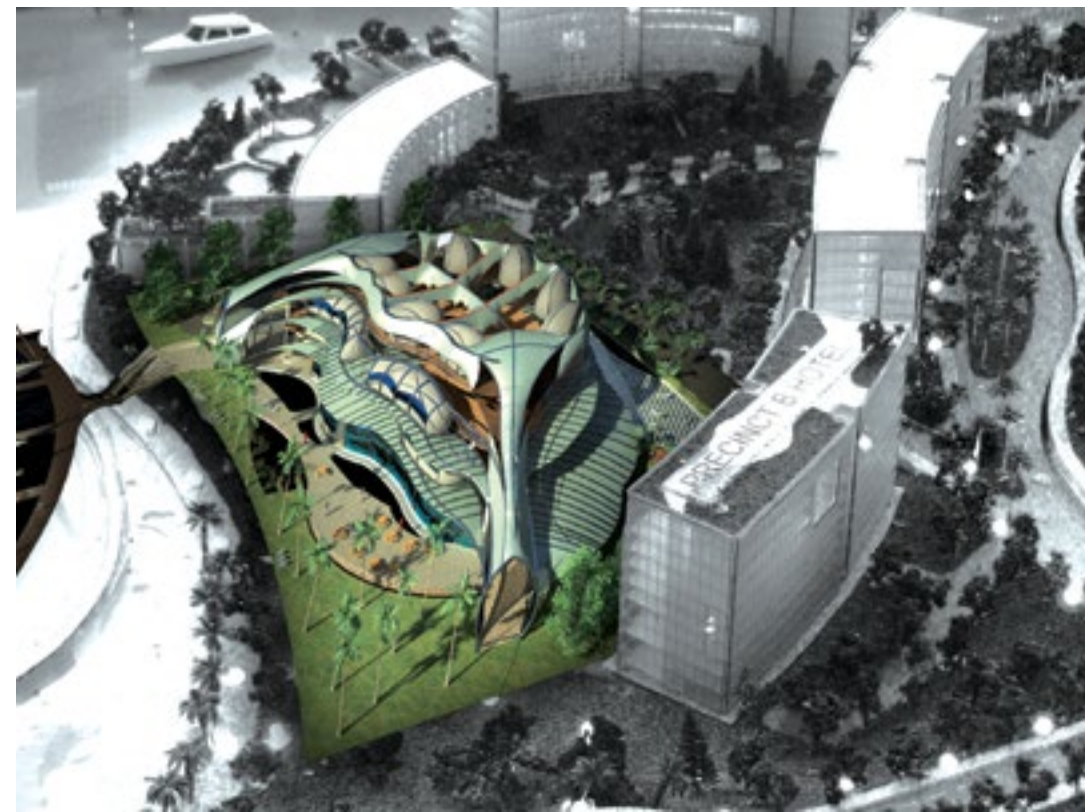
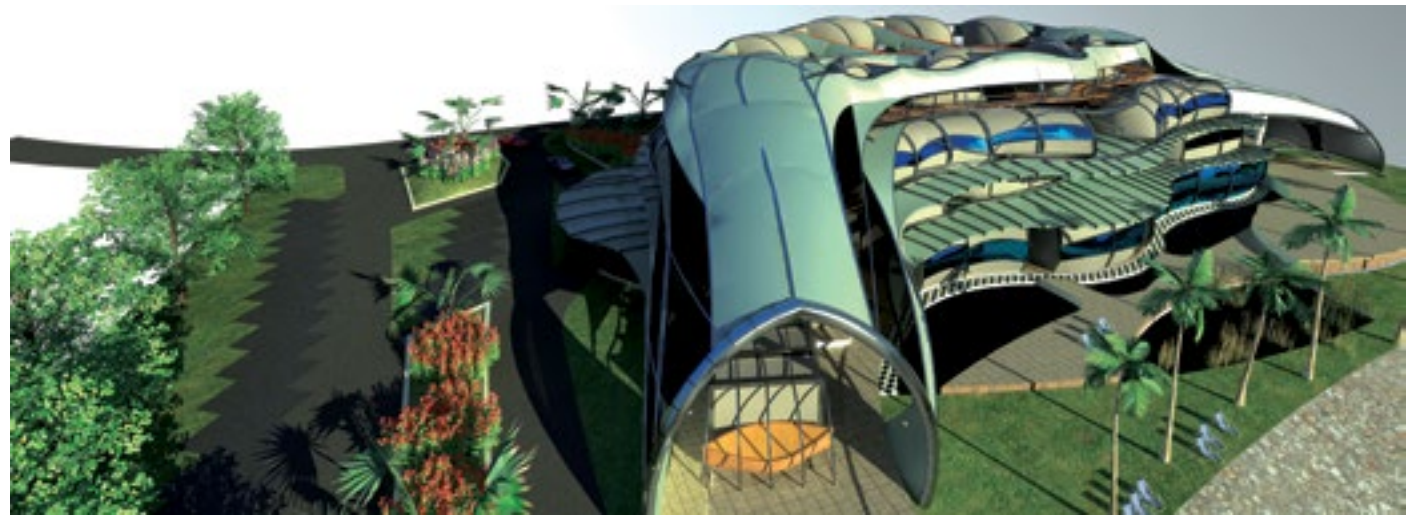


Biomorphic Hotel

Nik Ariff Azmee &
Meor Mohammad Fared

The Biomorphic Hotel seeks to provide seafarers, a break from the waves within an insular entity as a contrast to the open sea or seafront environment that they would have become accustomed to.

The biomorphic form of the boatel will be an environment for resting, pleasure and delight that would be enhanced by an internal garden sanctuary. The biomorphic accommodation units surrounding this garden relate them to the omnipresent seafront environment. It creates a more localised primary amphibious quality within the complex in relation to the land-sea dichotomy that surrounds it.



The accommodation is designed by Mohamad Khairul with more emphasis as supplementary living spaces to the living facilities already available within the watercraft themselves. They could therefore be used as either day or night spaces depending on how the seafarers choose to spend their time at the boatel and the amenities that it provides.

The skin enveloping the boatel is not designed to seal it hermetically but is only used for shade and, where necessary, to shield. This is to allow natural land and sea breezes to waft through the entire complex. Thus, reducing the need for large volume air conditioning. To this end, the artefact could have achieved this substantially more if the units were much further apart hence allowing more effective cross ventilation throughout the complex.



■ Mohamad Khairul Asri Yaacob