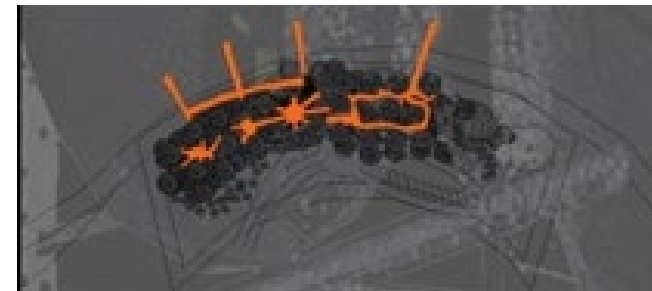
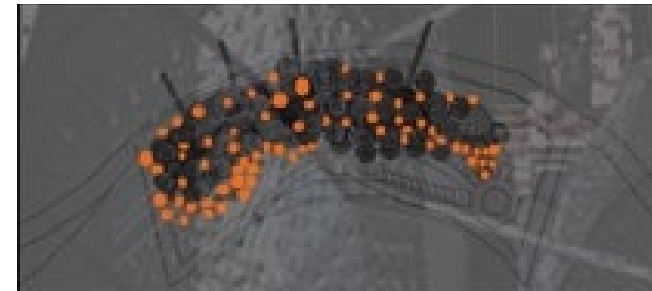
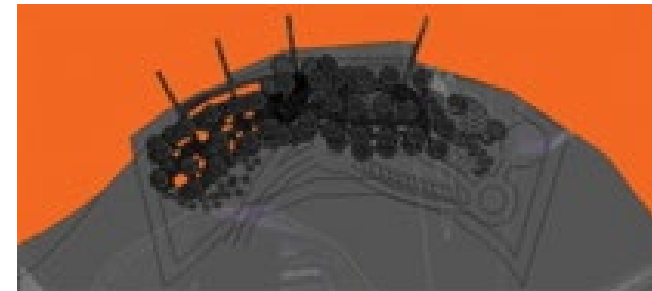


Celestial Paddock

Nik Ariff Azmee & Wan Srihani Wan Mohamed

When considering a hotel for seafarers, the immediate question would be how such a hotel could attract them away from their water crafts that would already have all the necessities for day to day living in them. This artefact addresses the matter by creating an environment on land for the seafarers to enjoy when they decide to take a break from the oceanic waves.



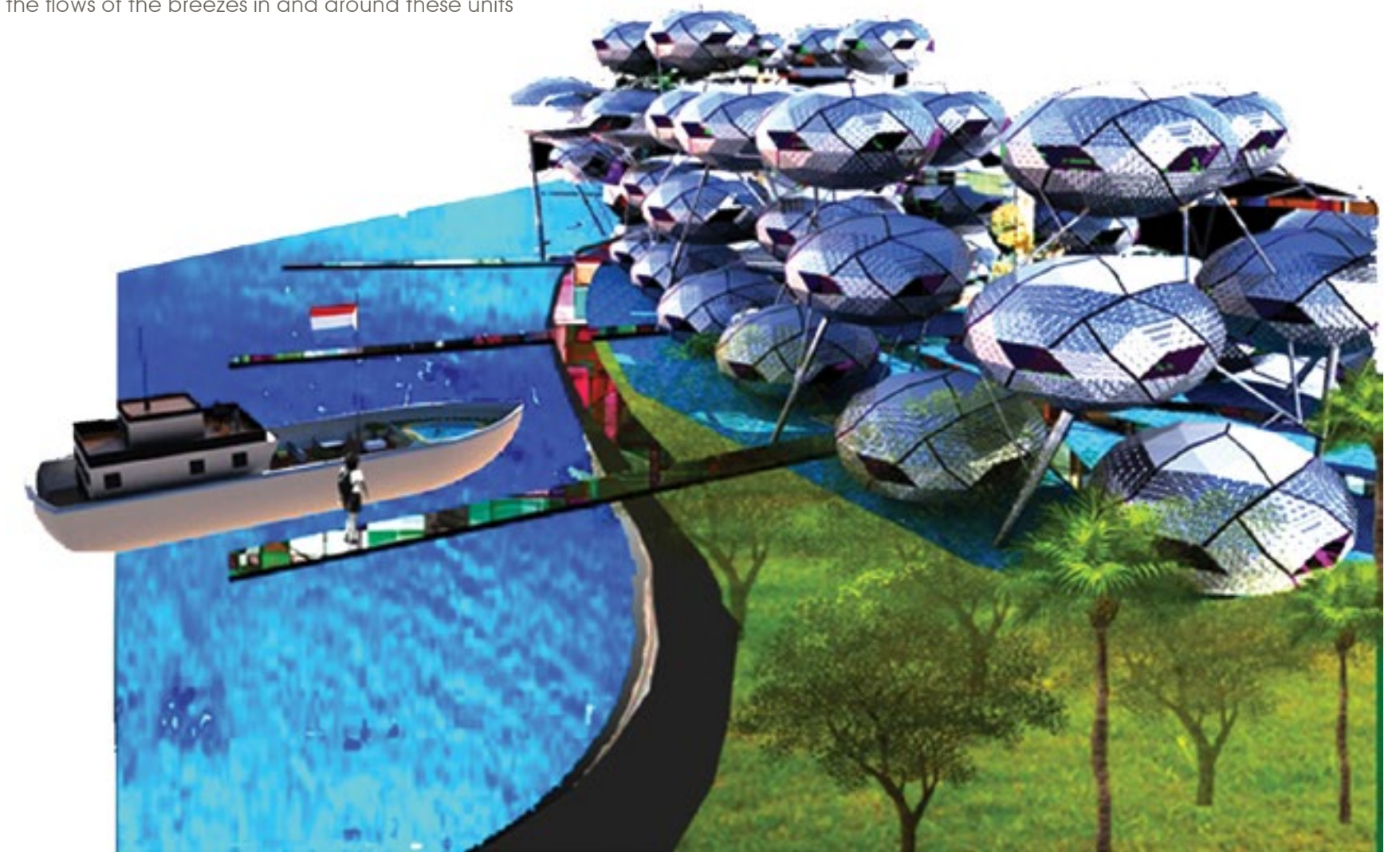
Conceptual Diagram



The design approach by Mohd Ramadan begins by crafting the landscape to create a land-sea i.e., amphibios rather than amphibian, a resort for the enjoyment of the seafarers on their land break. The intention is to draw them into an environment that would be conducive for resting, pleasure and delight. The other issue would then be to retain their choice for solitude as is correctly assumed to be part of their intentions for taking to the seas in the first place.

The accommodation units have been designed with this in mind by deliberating on how solitude could be attained within the facilities for a community of seafarers. The artefact answers this matter by providing solitude through isolation. Hence, the units are designed as chalets that hover around the amphibios resort allowing the occupants solitude at higher levels while still maintaining an intimate relation to the communal facilities.

The isolation of the units also allows their relationships with the surrounding seafront environment, particularly for the sea and land, to be developed by the flows of the breezes in and around these units



■ Mohd. Ramadan Shahabudin