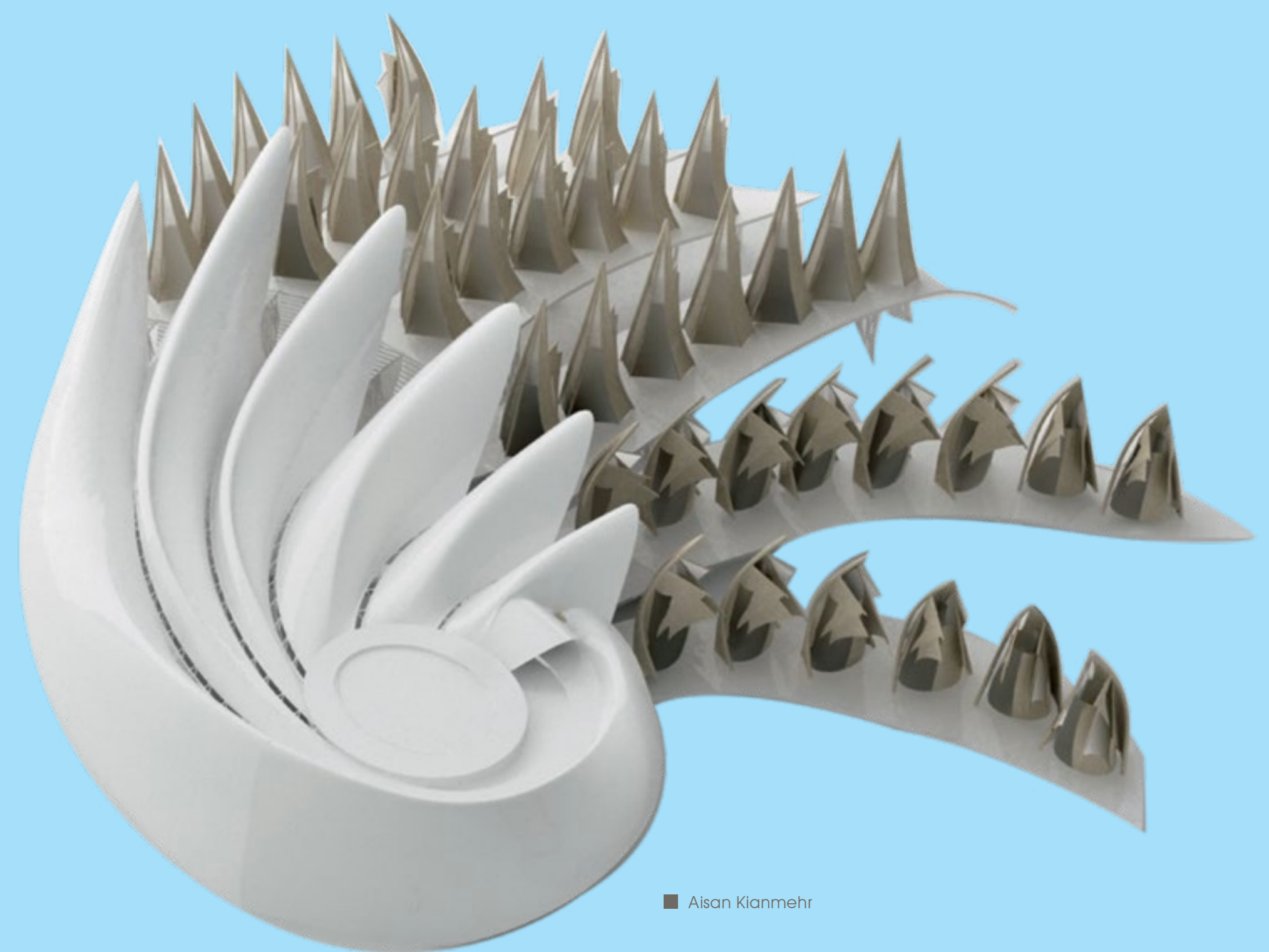
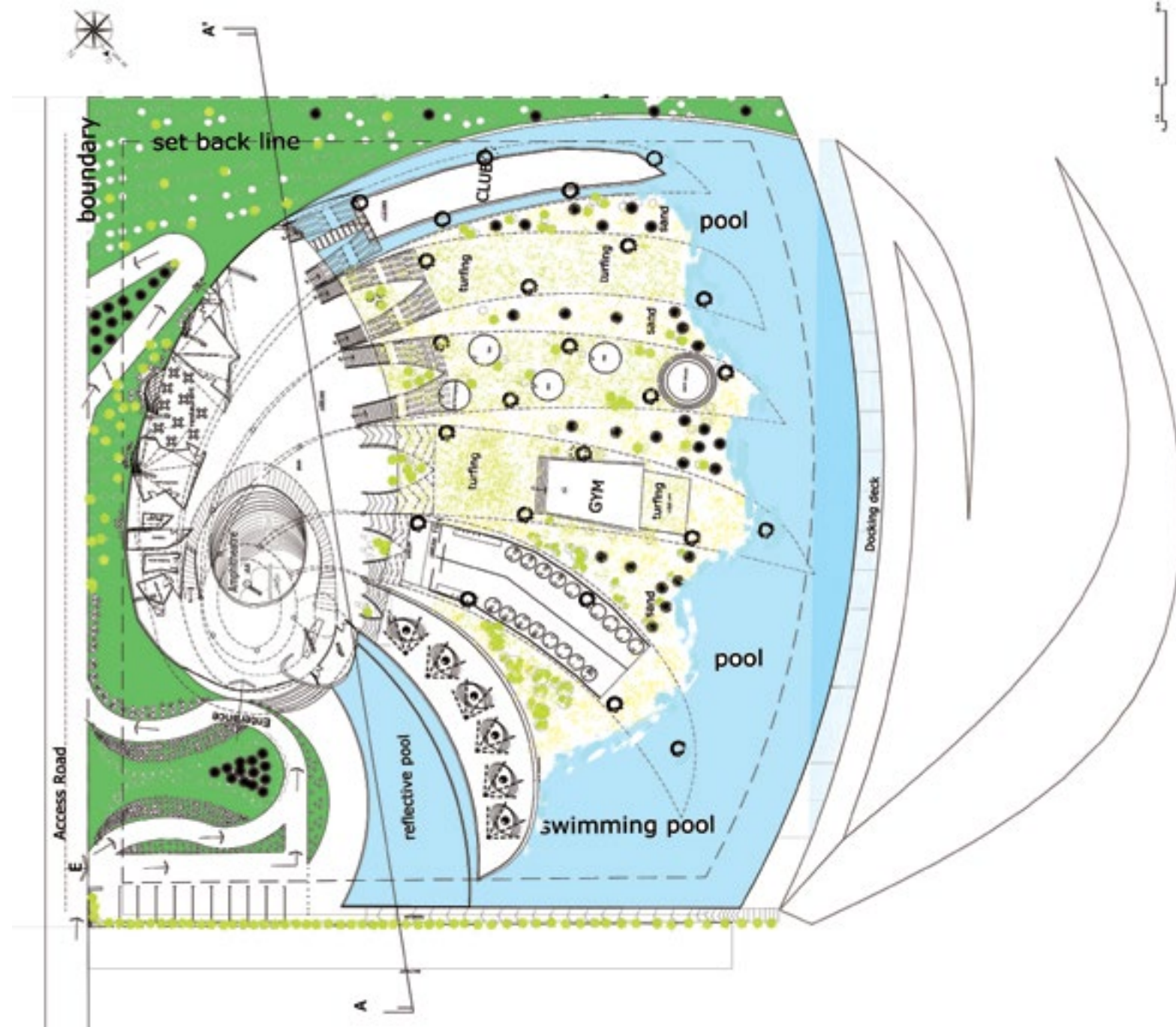


Seafaring Cove

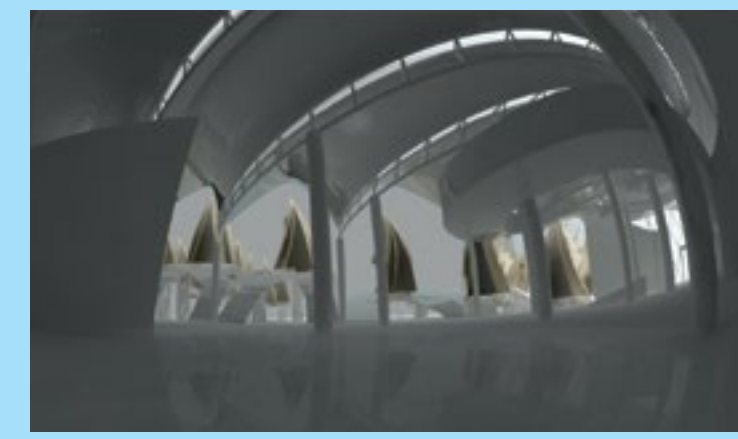
Nik Ariff Azmee & Kalsom Mohamad

This hotel for seafarers is designed by Aisan as land extension to their sea vessels. The accommodation units offer a landed alternative to the self-contained living vessels of long faring watercrafts.

These accommodations are designed as chalets to allow for the same living autonomy as of those boats and are crafted to draw in the environment of the waterfront. This is achieved by the use of wind as well as light scoops to capture the more desirable elements in while shielding away those less pleasing.



■ Aisan Kianmehr



The chalets are placed on piers that radiate out from landed communal facilities exclusive to those who seek to take a break on land during their voyages. The form of this central facility reaches out to the seafront with the intention of capturing the sea breezes and spiraling them into the heart of the mass. The spaces within are further crafted out according to the enveloping form thus creating as much as the designer could, a homogenous plan form.

The artefact chooses to provide a hotel type that would complement as well as supplement the seafarers rather than merely a design for a conventional hotel. The latter is deemed to be redundant to those who have chosen a lifestyle on the waters.