

# Hovering Chalets

Nik Ariff Azmee & Kalsom Mohamad

The artefact is a hotel-based accommodations for those who have chosen a life at sea. It offers them a land break with alternative accommodations that would allow them to enjoy land-based activities.

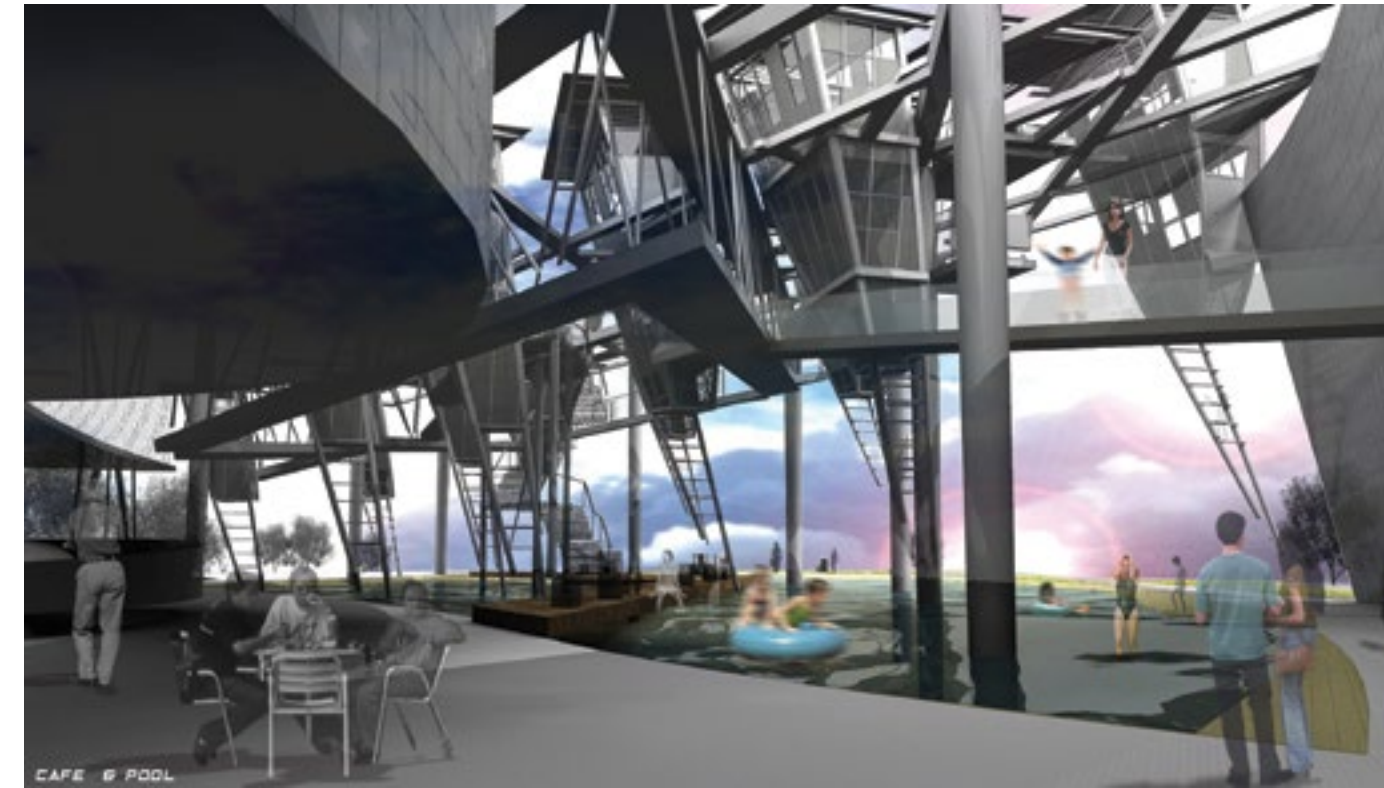
The accommodation units have been designed as a counterpoint to the living facilities of a boat. It is an autonomous living unit while still maintaining a quality that offers a more converse experience from that of generic landed accommodations.

Lee Qian Ling designed these chalets to hover over land. Apart from a more interesting relationship with the environment, they also offer immediate access to the land for activities that seafarers could enjoy during their breaks.

The space beneath the hovering rooms has not been left to chance but has been designed to create perceptual symbiosis with the hovering units for a homogeneous perception of the whole as a single entity.

Environmentally, the whole composition is akin to the traditional *kampung* configuration even though the artefact is much more regulated by the structural grid that holds up the chalets. Nonetheless, the placement of the chalets within the grid is recommended not to be regulated depending on their occupancies.

The hovering chalets themselves have been designed to relate to both the seafront environment at the upper levels as well the ground levels at the lower deck. The choice is then left to the occupants as to how they would prefer to spend their time in them while on land.



Lee Qian Ling

