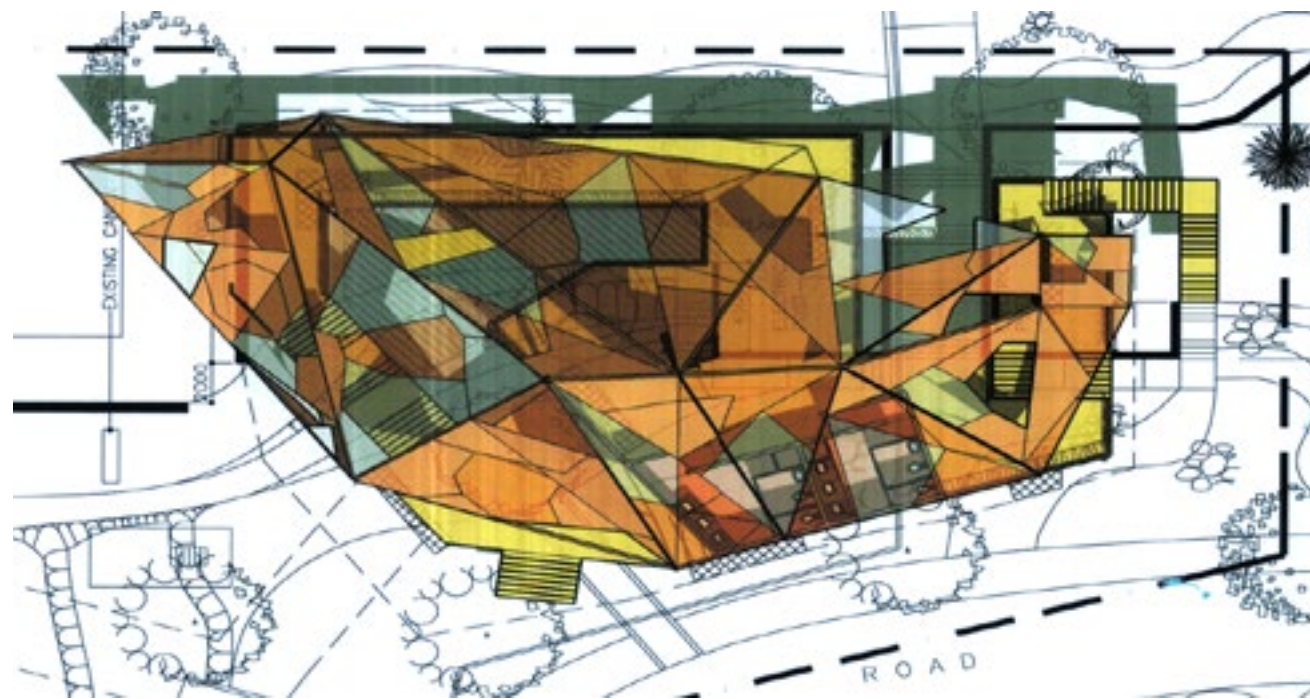


# Serenity Path

Abdul Rahim Mohd. Zin & Mohd Fakri Zaky Ja'afar

A modern form of architecture with a monumental modesty in its response to a serene site. It is very interesting to see the effect of the collaged graphical vein pattern on its modern pitched roof heightening the vein of the hill top of Bukit Melawati.

The proposed scheme manages to create the feeling of modesty in response to the natural surrounding of the hill and yet captures the sense of curiosity. The form and the interior spaces are both simple yet they are inviting enough for a visitor going for a quiet exploration and looking down at the archaeological process at the ground level. One can feel the calmness of the whole process, catch a glimpse of the view outside, smell the surroundings and listen to the past glory of the hill.



■ Aimi Farhana Ghazali

