



## Shell Retreat

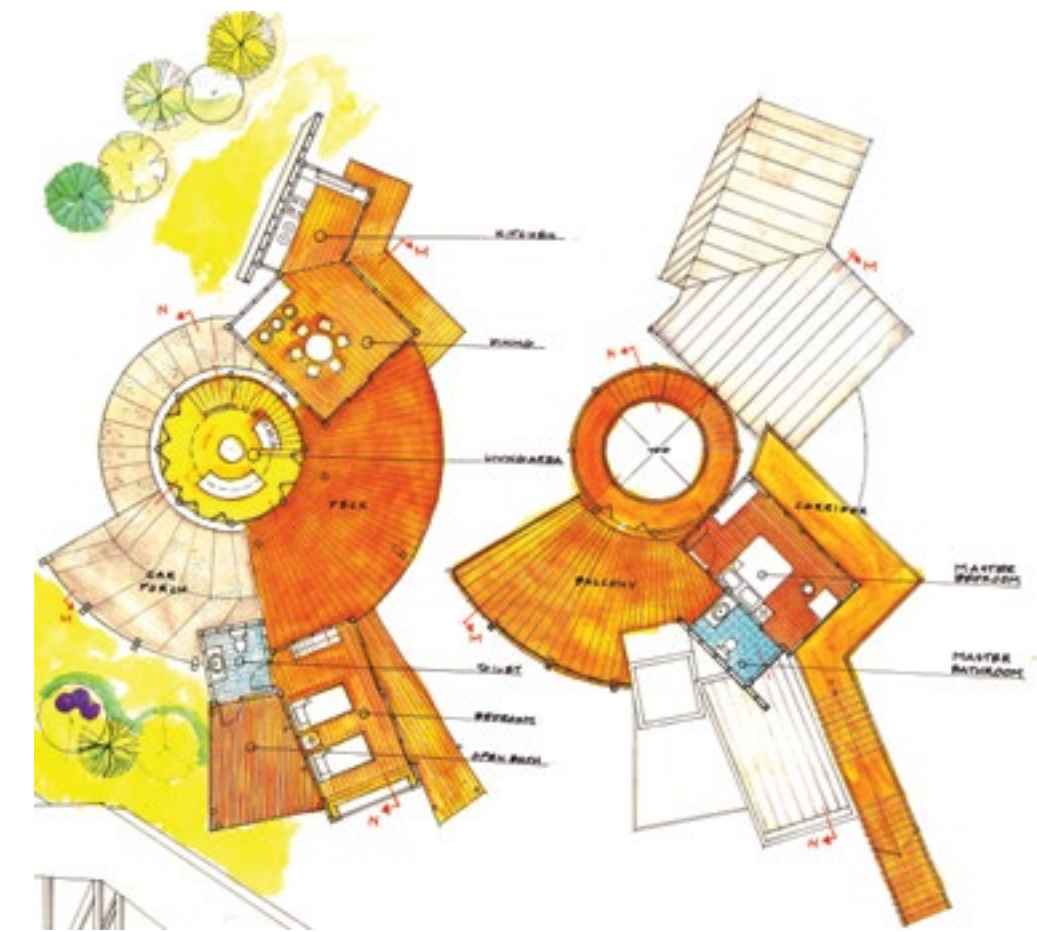
Roslina Sharif

A Getaway, the final project for the first year, is designed to accommodate a family of five in a serene and tranquil environment with the objective of rejuvenating and enjoying the beauty of the natural surrounding. It is designed to respond to simple environmental and site factors where the design intention is to create a perfect hide away that separates the 'real' and 'illusion' yet getting the feel of primordial relationship with mother nature. It speaks local but in a universal language where the space planning contributes to the Malay vernacular housing such as the use of decks in the design.



The design concept was derived from the study of a shell where its characteristics i.e., safe, secure, private, strong and inclusive were applied. The radial organisation, derived from lines at the surface of the shell, was used by Ahmad Helmi as the design approach for space planning and form development. The design processes involved precedent studies, site analysis and programming spatial relationship between the spaces.

The site is a secluded beach in Langkawi which offers the majestic view of the sunset. Thus, an axis of the sunset is taken as a node on the site when designing the spatial organisation. The living room is located at the center of the house and the rest of the spaces emanate from it at different levels of the house while getting the best view of the sunset. The design of decks and the use of shading devices conveniently limit direct sunlight from penetrating into the space. The orientation of the house also helps to define a private space of landscape where it brings the natural landscape into the house. All in all, the design was mainly based on the idea of creating a hide-away where space planning and indoor comfort are the main factors for consideration while maintaining the fundamentals and understanding of basic site factors.



Ahmad Helmi Abdul Zubair