

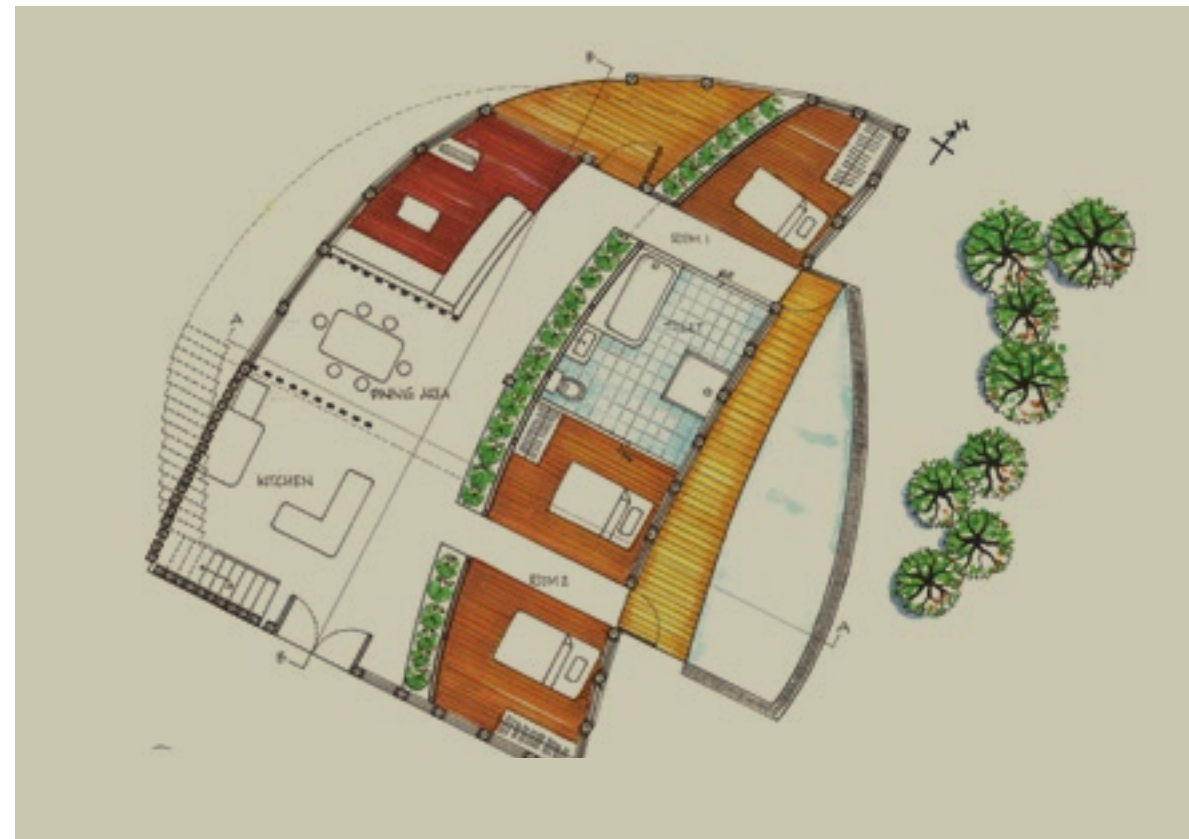
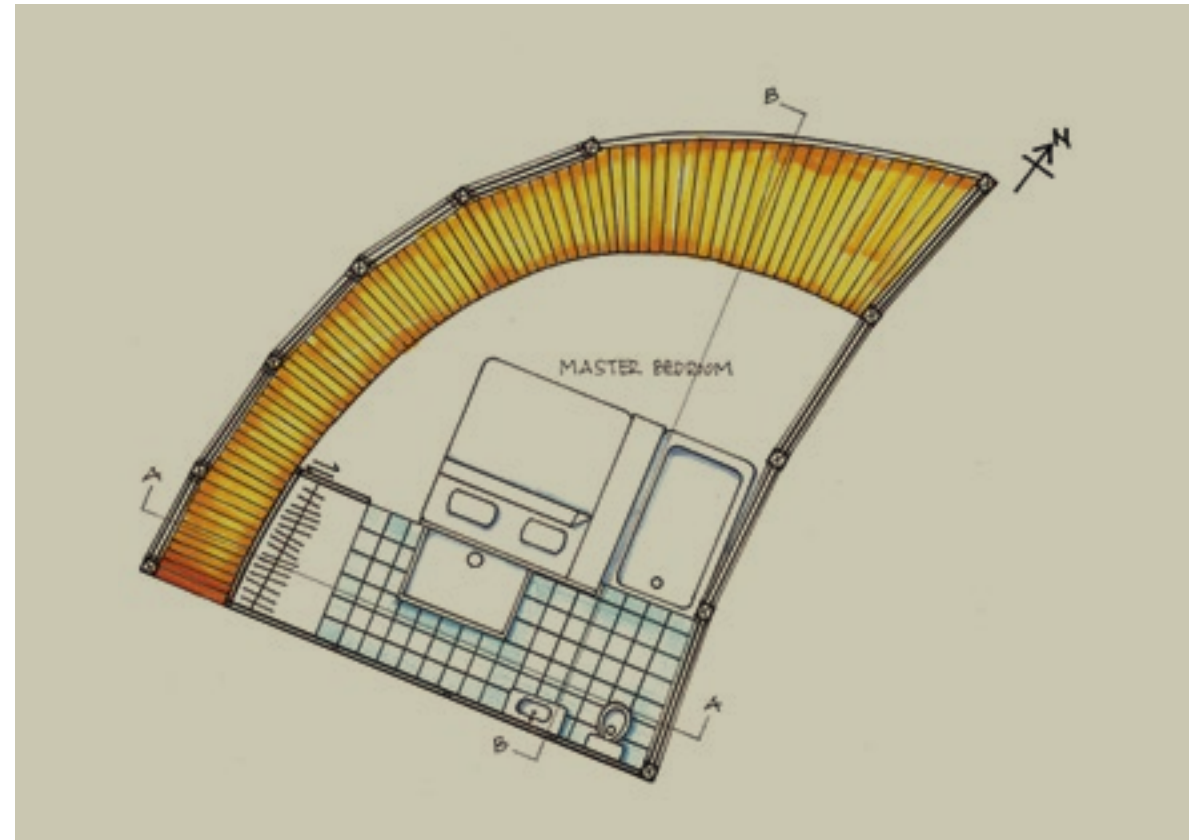
Rhythmic Motion

Roslina Sharif

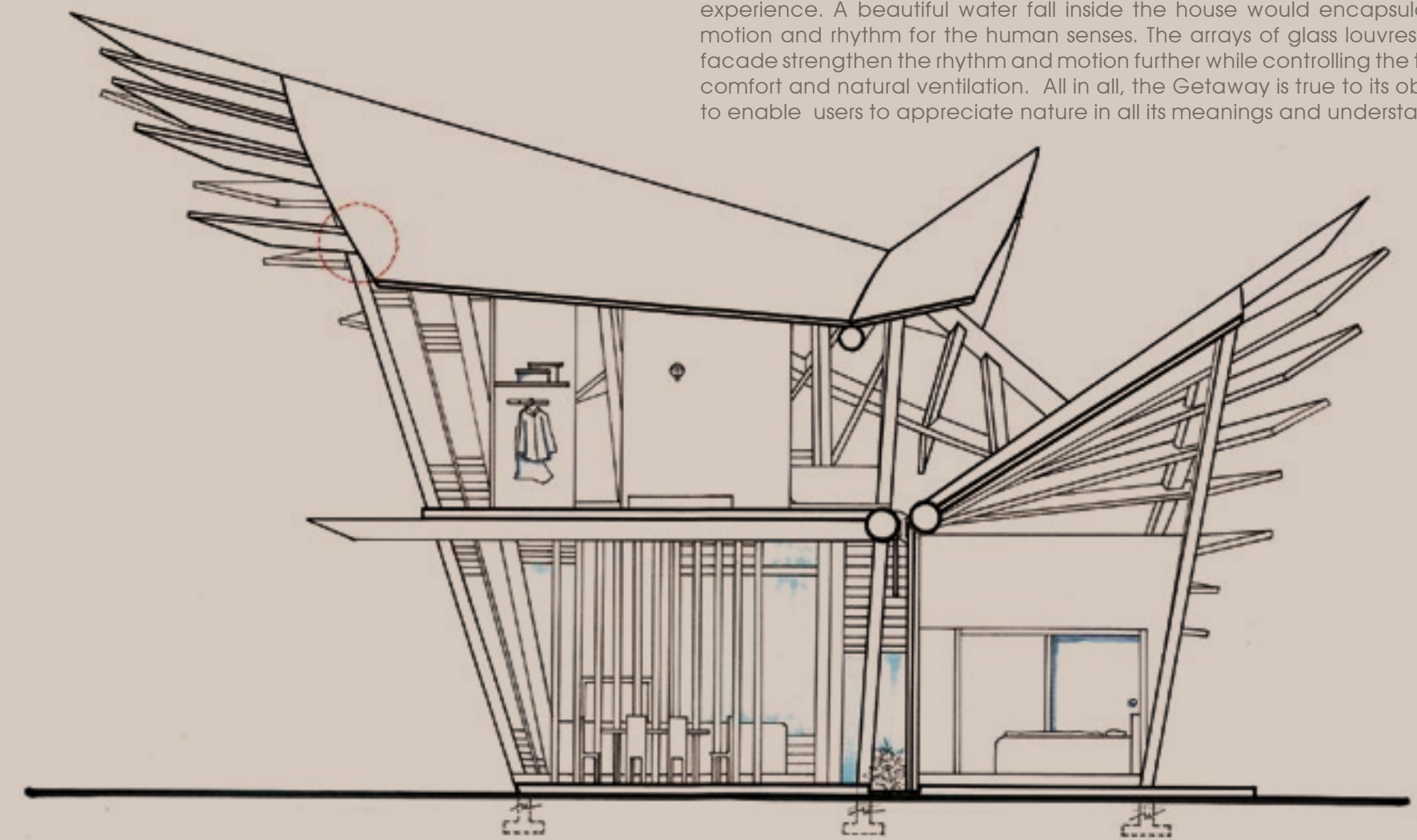
A Getaway, is the starter for the First Year students in their spatial design project. It deals with simple site factors. It is designed as a place to appreciate nature while relaxing the mind and body. The site is a secluded beach which permits good view of the blue ocean. The get away orientation successfully captures the serene and majestic view of the sunrise and sunset.

The excitement and the desire in experiencing the ocean and the rhythmic movement of the water are encapsulated in the design concept. The main structure, the skeletal timber structure, is arranged in such a way that creates and embodies the 'motion' concept. The motion starts from the ground and modulates up towards the ocean. Whilst creating the rhythm, the exposed structure also acts as a shading device resulting in captivating shadows playing on the ground. This motional and rhythmic skeletal timber structure has created a very large and sweeping roof, and undoubtedly easily recognisable from afar. Thus, becoming the potential landmark at the area.

For interior, a small garden and water fall are inserted between the living room and kitchen right up to the children's bedrooms to bring nature into the house. A glass partition is used between children bedroom and the living room so that during rainy days water will be trapped and will fall or flow into the house. Water will be visible through the glass partition creating a calming and yet exciting



Chen Mei Sien



experience. A beautiful water fall inside the house would encapsulate the motion and rhythm for the human senses. The arrays of glass louvres on the facade strengthen the rhythm and motion further while controlling the thermal comfort and natural ventilation. All in all, the Getaway is true to its objective to enable users to appreciate nature in all its meanings and understandings.

